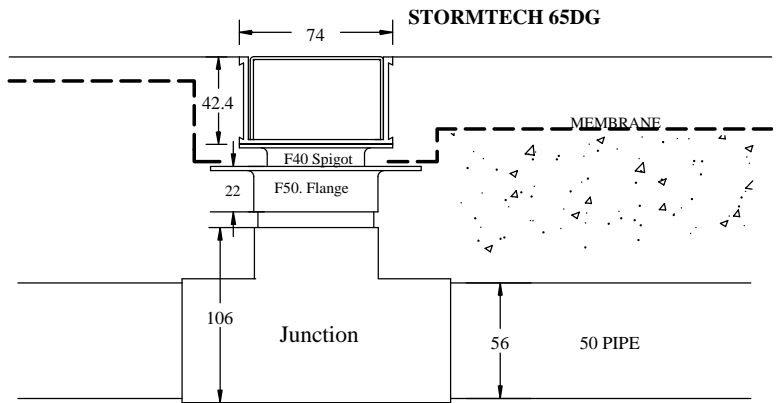


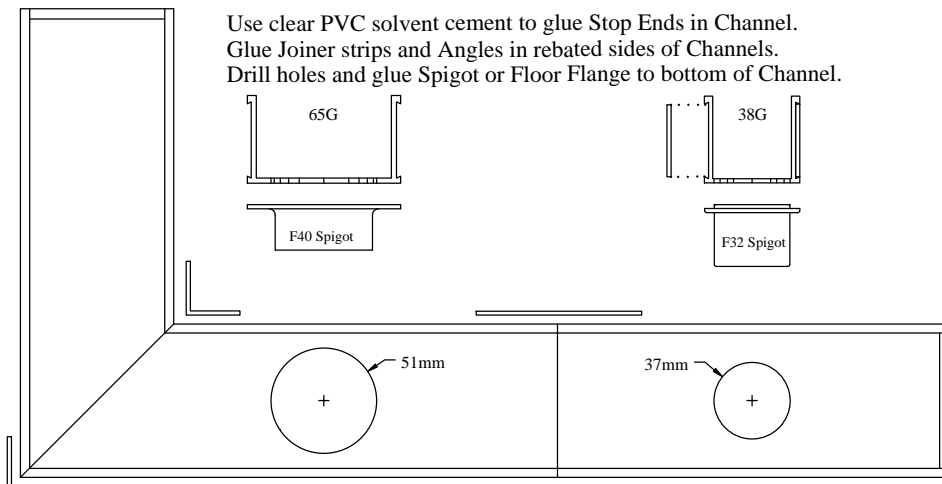
Provide access to drain pipes for cleaning.



A 32 Spigot fits in a 40 DWV pipe and should drain 0.5 L/s..... We recommend these Spigots every 1m.. not more than 1/2m from end.
 A 40 Flange fits in a 50 DWV pipe and should drain 1.0 L/s..... We recommend these Spigots every 2m.. not more than 1.0m from end.
 The loose fitting Spigots provide an outlet for moisture in the waterproof rebate and allows the Channel to be removed for safe keeping until tiling.

CHANNEL ASSEMBLY

Use clear PVC solvent cement to glue Stop Ends in Channel.
 Glue Joiner strips and Angles in rebated sides of Channels.
 Drill holes and glue spigot or Floor Flange to bottom of Channel.



SPECIAL ASSEMBLY

