

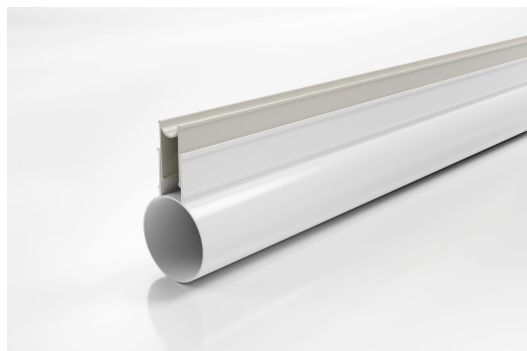


ARCHITECTURAL  
GRATES + DRAINS



# SD90

## Slot Drain



### 90mm Drain with UPVC Beige Insert

The SD90 features a 25mm opening on the top with 20 slots draining into a concealed 90mm drain pipe with UPVC beige insert.

The Slot Drain can be completed with a 30mm wide architectural wedge-wire grate as an optional item.

**Please note the insert comes without holes**

**Code** SD90

**Range** Slot Drain

**Category** Modular Kits

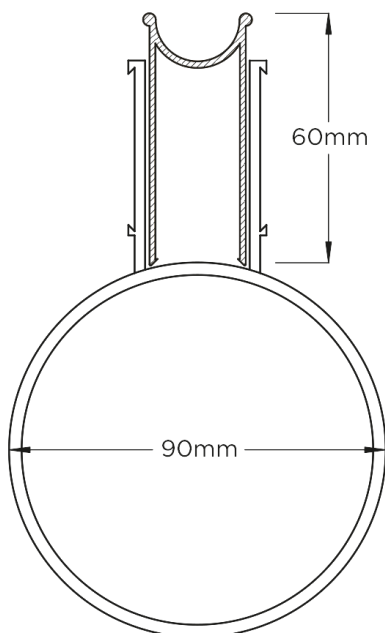
**Channel Material** uPVC

### SPECIFICATIONS + DIMENSIONS

Channel Width	25mm
Channel Depth	Adjustable
Length(s)	3000mm
Outlet Size	N/A

### PRODUCT APPLICATIONS

Commercial Drainage  
Courtyard / Patio Drainage  
Driveway Drainage  
Paved Area Drainage



Grates longer than 1500mm supplied in sections. Tile Inserts longer than 1200mm supplied in sections. Channels over 3000mm supplied in sections with joiner. +/-2mm tolerance on dimensions.

Copyright © Stormtech Pty Ltd. Patent 733361. Drawings not to scale, please use dimensions shown.  
Downloaded 29/04/2024 (please check for updates)



Visit **stormtech.com.au**  
for tools + inspiration.

Phone **1300 653 403**

Email **info@stormtech.com.au**