

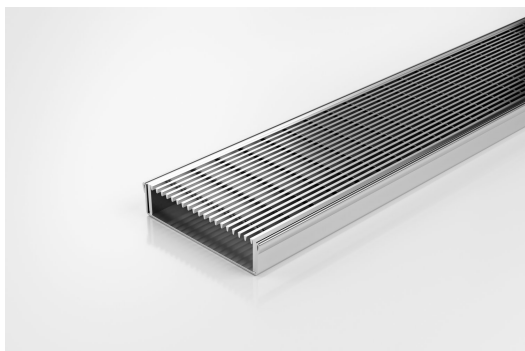


ARCHITECTURAL  
GRATES + DRAINS



# 100ARi20

## Linear Drain



**Code** 100ARi20

**Range** 100

**Grate Style** AR

**Category** Modular Kits

**Channel Material** Stainless Steel

**Steel Grade** 316

Grates longer than 1500mm supplied in sections. Tile Inserts longer than 1200mm supplied in sections. Channels over 3000mm supplied in sections with joiner. +/-2mm tolerance on dimensions.

The 100ARi20 is a modular drainage system with a stainless steel grate and stainless steel channel.

The 100AR is our premium style grate featuring a 2mm wire/2.5mm gap.

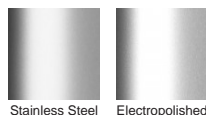
Manufactured from 316 marine grade steel.

Lengths over 3000mm available on request.

### SPECIFICATIONS + DIMENSIONS

<b>Channel Width</b>	106mm
<b>Channel Depth</b>	23mm
<b>Length(s)</b>	900mm 1000mm 1200mm 1500mm 1800mm 1900mm 2000mm
<b>Outlet Size</b>	DN50, DN80, DN100

### STORMTECH COLOUR FINISHES



Electroplate finishes subject to natural variation with time and local environment. Factors such as pools/surf beaches may require electropolishing. Contact us for suitability.

### PRODUCT APPLICATIONS

Bathroom Drainage	Shower Drainage
Balcony Drainage	Multi-Residential Drainage
Commercial Drainage	Special Needs Drainage
Courtyard / Patio Drainage	Threshold Drainage
Pool and Spa Area Drainage	Suspended Slab Drainage
Paved Area Drainage	Wet Area Drainage

Copyright © Stormtech Pty Ltd. Patent 733361. Drawings not to scale, please use dimensions shown.  
Downloaded 29/04/2024 (please check for updates)



Visit **stormtech.com.au**  
for tools + inspiration.

Phone **1300 653 403**

Email **info@stormtech.com.au**