

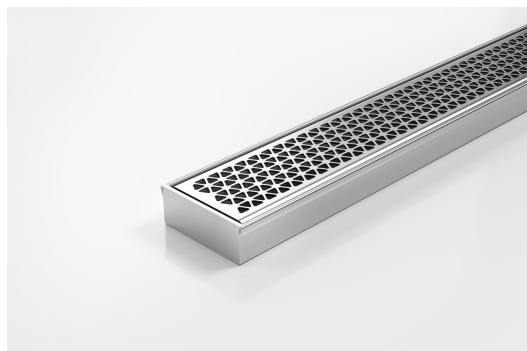


ARCHITECTURAL  
GRATES + DRAINS



# 65MNDi25MTL

## Linear Drain



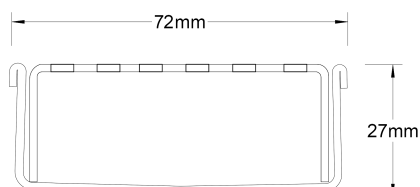
**Code** 65MNDi25MTL

**Range** 65

**Grate Style** MND

**Category** Made-to-Length

**Channel Material** Stainless Steel



Grates longer than 1500mm supplied in sections. Tile Inserts longer than 1200mm supplied in sections. Channels over 3000mm supplied in sections with joiner. +/-2mm tolerance on dimensions.

**Complete stainless steel drainage unit made to specified length with specified outlet position.**

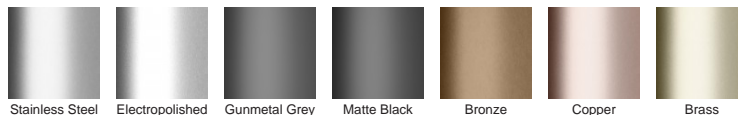
A world first in architectural linear grates, the partnership with Marc Newson has created a new decorative solution for wet areas, incorporating Newson's signature tessellated hexagonal pattern.

**Refer to AS3500 for outlet pipe sizes specific to your installation.**

### SPECIFICATIONS + DIMENSIONS

<b>Channel Width</b>	72mm
<b>Channel Depth</b>	27mm
<b>Length(s)</b>	As Required
<b>Outlet Size</b>	DN40, DN50, DN65

### STORMTECH COLOUR FINISHES



**Electroplate finishes subject to natural variation with time and local environment. Factors such as pools/surf beaches may require electropolishing. Contact us for suitability.**

### PRODUCT APPLICATIONS

Bathroom Drainage	Hospitality Drainage
Aged / Health Care Drainage	Paved Area Drainage
Balcony Drainage	Shower Drainage
Commercial Drainage	Multi-Residential Drainage
Courtyard / Patio Drainage	Special Needs Drainage
Pool and Spa Area Drainage	Threshold Drainage

Copyright © Stormtech Pty Ltd. Patent 733361. Drawings not to scale, please use dimensions shown.  
Downloaded 29/04/2024 (please check for updates)



Visit **stormtech.com.au**  
for tools + inspiration.

Phone **1300 653 403**

Email **info@stormtech.com.au**