

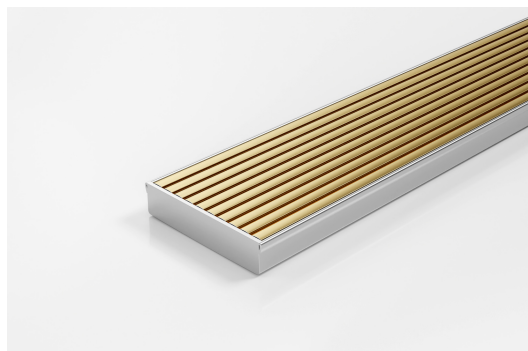


ARCHITECTURAL
GRATES + DRAINS



100AAiCO20-BG

Linear Drain



Code 100AAiCO20-BG

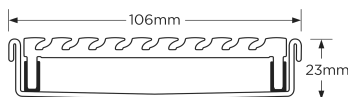
Range 100

Grate Style AA

Category Fixed-Length Units

Channel Material Stainless Steel

Steel Grade 316



Grates longer than 1500mm supplied in sections. Tile Inserts longer than 1200mm supplied in sections. Channels over 3000mm supplied in sections with joiner. +/-2mm tolerance on dimensions.

The 100AAiCO20-BG drainage unit features our Anodised Aluminium Wave grate design in Brass-Gold paired with a Stainless Steel channel.

Complete finished unit, ready to install with all Aluminium Grate and 316 marine grade Stainless Steel channel and centre outlet.

SPECIFICATIONS + DIMENSIONS

Channel Width	106mm			
Channel Depth	23mm			
Length(s)	900mm	1000mm	1200mm	1500mm
Outlet Size	DN80			

STORMTECH COLOUR FINISHES



Matte Black



Aluminium



Brass-Gold

Electroplate finishes subject to natural variation with time and local environment. Factors such as pools/surf beaches may require electropolishing. Contact us for suitability.

PRODUCT APPLICATIONS

Bathroom Drainage
Aged / Health Care Drainage
Balcony Drainage
Commercial Drainage
Courtyard / Patio Drainage
Pool and Spa Area Drainage

Hospitality Drainage
Paved Area Drainage
Shower Drainage
Multi-Residential Drainage
Special Needs Drainage
Threshold Drainage

Copyright © Stormtech Pty Ltd. Patent 733361. Drawings not to scale, please use dimensions shown.
Downloaded 29/04/2024 (please check for updates)



Visit **stormtech.com.au**
for tools + inspiration.

Phone **1300 653 403**

Email **info@stormtech.com.au**