



Stormtech™

TM

# Stormtech Product Guide › 2018

ARCHITECTURAL GRATES + DRAINS





# Stormtech Product Guide > 2018

## Contents

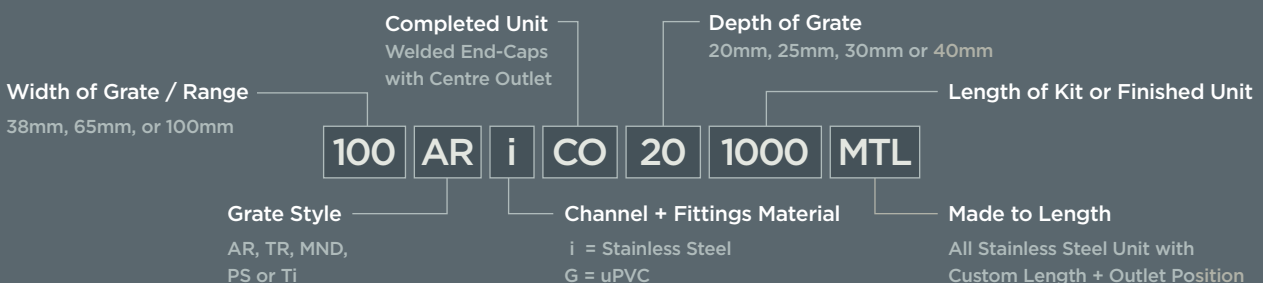
### Linear Drains

<b>100 Range</b> 100mm wide grate	PAGE 1 - 14
<b>65 Range</b> 65mm wide grate	PAGE 15 - 33
<b>38 Range</b> 38mm wide grate	PAGE 34 - 35
<b>Threshold Range</b>	PAGE 36 - 38
<b>Vinyl Clamp Range</b>	PAGE 39
<b>Special Assembly + Slot Drain</b>	PAGE 40 - 41
High Performance Outdoor Drainage	
<b>Accessories + Finishes</b>	PAGE 42 - 43

### Floor Wastes

<b>Square Range</b>	PAGE 44 - 45
<b>Custom</b>	
<b>Custom Fabrication</b>	PAGE 46 - 47
<b>Additional Information</b>	
<b>Hydraulic Guide</b>	PAGE 48
<b>Product Care</b>	PAGE 48
<b>Grate Styles + Finishes</b>	PAGE 49

## Product Codes Understanding Stormtech product codes



DISCLAIMER : Acceptable size variations +/- 2mm  
Made-to-Length (MTL) minimum charge of 800mm



# 100 Range

- ✓ 100mm Grate Width
- ✓ 23mm - 42mm Channel Depth
- ✓ Stainless Steel or uPVC Drainage Channel
- ✓ Floor + Wall Flange Options

Made-to-Length Depth: 23mm - 42mm

316 MARINE GRADE  
STAINLESS STEEL

OPTIONAL FINISHES  
SEE PAGE 49

	PRODUCT CODE	DESCRIPTION	WIDTH x DEPTH	OUTLET SIZE	LENGTH
	<b>100ARi20MTL</b>	All stainless steel drainage unit made to length with specified outlet position. Premium Architectural Grate 2mm wire / 2.5mm gap <b>Finish:</b> Stainless Steel	106mm x 23mm	DN40 / DN50 DN65 / DN80 DN100	As Required
	<b>100TRi20MTL</b>	All stainless steel drainage unit made to length with specified outlet position. Standard Grate 3mm wire / 5mm gap <b>Finish:</b> Stainless Steel	106mm x 23mm	DN40 / DN50 DN65 / DN80 DN100	As Required
	<b>100Ti20MTL</b>	All stainless steel drainage unit made to length with specified outlet position. Tile Insert / 1.5mm thick <b>Finish:</b> Stainless Steel	106mm x 23mm Suits tiles up to 10mm thick	DN40 / DN50 DN65 / DN80 DN100	As Required
	<b>100MNDi20MTL</b>	All stainless steel drainage unit made to length with specified outlet position. Marc Newson Design Grate <b>Finish:</b> Stainless Steel	106mm x 23mm	DN40 / DN50 DN65 / DN80 DN100	As Required
	<b>100PSi20MTL</b>	All stainless steel drainage unit made to length with specified outlet position. Punched Slot Grate <b>Finish:</b> Stainless Steel	106mm x 23mm	DN40 / DN50 DN65 / DN80 DN100	As Required
	<b>100FTi25MTL</b>	All stainless steel drainage unit made to length with specified outlet position. Flat Top Grate <b>Finish:</b> Stainless Steel	106mm x 27mm	DN40 / DN50 DN65 / DN80 DN100	As Required
	<b>100Ti30MTL</b>	All stainless steel drainage unit made to length with specified outlet position. Tile Insert / 3mm thick <b>Finish:</b> Stainless Steel	106mm x 31mm Suits tiles up to 12mm thick	DN40 / DN50 DN65 / DN80 DN100	As Required
	<b>100ARi40MTL</b>	All stainless steel drainage unit made to length with specified outlet position. Premium Architectural Grate 2mm wire / 2.5mm gap <b>Finish:</b> Stainless Steel	106mm x 42mm	DN40 / DN50 DN65 / DN80 DN100	As Required

**Made-to-Length** Depth: 23mm – 42mm

**316 MARINE GRADE**  
STAINLESS STEEL

**OPTIONAL FINISHES**  
SEE PAGE 49

	PRODUCT CODE	DESCRIPTION	WIDTH x DEPTH	OUTLET SIZE	LENGTH
	<b>100TRI40MTL</b>	All stainless steel drainage unit made to length with specified outlet position. Standard grate 3mm wire / 5mm gap <b>Finish:</b> Stainless Steel	106mm x 42mm	DN40 / DN50 DN65 / DN80 DN100	As Required
	<b>100Ti40MTL</b>	All stainless steel drainage unit made to length with specified outlet position. Tile Insert / 3mm thick <b>Finish:</b> Stainless Steel	106mm x 42mm Suits tiles up to 25mm thick	DN40 / DN50 DN65 / DN80 DN100	As Required
	<b>100PSi40MTL</b>	All stainless steel drainage unit made to length with specified outlet position. Punched Slot Grate <b>Finish:</b> Stainless Steel	106mm x 42mm	DN40 / DN50 DN65 / DN80 DN100	As Required

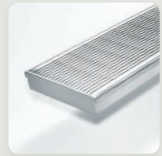
**Made-to-Length** With Wall / Floor Flange

**316 MARINE GRADE**  
STAINLESS STEEL

**OPTIONAL FINISHES**  
SEE PAGE 49

	PRODUCT CODE	DESCRIPTION	GRATE WIDTH	OUTLET SIZE	LENGTH
	<b>100ARiMTLF</b>	All stainless steel unit made to length with specified outlet position and specified floor and/or wall flanges. Premium Architectural Grate 2mm wire / 2.5mm gap <b>Finish:</b> Stainless Steel	Grate Width: 100mm + Flange	DN40 / DN50 DN65 / DN80 DN100	As Required
	<b>100TRiMTLF</b>	All stainless steel unit made to length with specified outlet position and specified floor and/or wall flanges. Standard Grate 3mm wire / 5mm gap <b>Finish:</b> Stainless Steel	Grate Width: 100mm + Flange	DN40 / DN50 DN65 / DN80 DN100	As Required
	<b>100TiMTLF</b>	All stainless steel unit made to length with specified outlet position and specified floor and/or wall flanges. Tile Insert <b>Finish:</b> Stainless Steel	Grate Width: 100mm + Flange Suits tiles up to 12mm thick	DN40 / DN50 DN65 / DN80 DN100	As Required
	<b>100PSiMTLF</b>	All stainless steel unit made to length with specified outlet position and specified floor and/or wall flanges. Punched Slot Grate <b>Finish:</b> Stainless Steel	Grate Width: 100mm + Flange	DN40 / DN50 DN65 / DN80 DN100	As Required

## Fixed-Length Units With Centre Outlet

316 MARINE GRADE  
STAINLESS STEELOPTIONAL FINISHES  
SEE PAGE 49

PRODUCT CODE	DESCRIPTION	WIDTH x DEPTH	OUTLET SIZE	LENGTH
<b>100ARiCO20-0900</b>	Complete stainless steel drainage unit with centre outlet. Premium Architectural Grate 2mm wire / 2.5mm gap <b>Finish:</b> Stainless Steel	106mm x 23mm	DN80	900mm
<b>100ARiCO20-1000</b>	Complete stainless steel drainage unit with centre outlet. Premium Architectural Grate 2mm wire / 2.5mm gap <b>Finish:</b> Stainless Steel	106mm x 23mm	DN80	1000mm
<b>100ARiCO20-1200</b>	Complete stainless steel drainage unit with centre outlet. Premium Architectural Grate 2mm wire / 2.5mm gap <b>Finish:</b> Stainless Steel	106mm x 23mm	DN80	1200mm
<b>100ARiCO20-1500</b>	Complete stainless steel drainage unit with centre outlet. Premium Architectural Grate 2mm wire / 2.5mm gap <b>Finish:</b> Stainless Steel	106mm x 23mm	DN80	1500mm

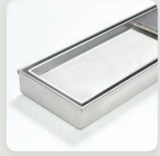


<b>100TRiCO20-0900</b>	Complete stainless steel drainage unit with centre outlet. Standard grate 3mm wire / 5mm gap <b>Finish:</b> Stainless Steel	106mm x 23mm	DN80	900mm
<b>100TRiCO20-1000</b>	Complete stainless steel drainage unit with centre outlet. Standard grate 3mm wire / 5mm gap <b>Finish:</b> Stainless Steel	106mm x 23mm	DN80	1000mm
<b>100TRiCO20-1200</b>	Complete stainless steel drainage unit with centre outlet. Standard grate 3mm wire / 5mm gap <b>Finish:</b> Stainless Steel	106mm x 23mm	DN80	1200mm
<b>100TRiCO20-1500</b>	Complete stainless steel drainage unit with centre outlet. Standard grate 3mm wire / 5mm gap <b>Finish:</b> Stainless Steel	106mm x 23mm	DN80	1500mm



<b>100TiCO20-0900</b>	Complete stainless steel drainage unit with centre outlet. Tile Insert / 1.5mm thick <b>Finish:</b> Stainless Steel	106mm x 23mm Suits tiles up to 10mm thick	DN80	900mm
<b>100TiCO20-1000</b>	Complete stainless steel drainage unit with centre outlet. Tile Insert / 1.5mm thick <b>Finish:</b> Stainless Steel	106mm x 23mm Suits tiles up to 10mm thick	DN80	1000mm
<b>100TiCO20-1200</b>	Complete stainless steel drainage unit with centre outlet. Tile Insert / 1.5mm thick <b>Finish:</b> Stainless Steel	106mm x 23mm Suits tiles up to 10mm thick	DN80	1200mm

## Fixed-Length Units With Centre Outlet

316 MARINE GRADE  
STAINLESS STEELOPTIONAL FINISHES  
SEE PAGE 49

PRODUCT CODE	DESCRIPTION	WIDTH x DEPTH	OUTLET SIZE	LENGTH
100TiCO30-0900	Complete stainless steel drainage unit with centre outlet. Tile Insert / 3mm thick <b>Finish:</b> Stainless Steel	106mm x 31mm Suits tiles up to 12mm thick	DN80	900mm
100TiCO30-1000	Complete stainless steel drainage unit with centre outlet. Tile Insert / 3mm thick <b>Finish:</b> Stainless Steel	106mm x 31mm Suits tiles up to 12mm thick	DN80	1000mm
100TiCO30-1200	Complete stainless steel drainage unit with centre outlet. Tile Insert / 3mm thick <b>Finish:</b> Stainless Steel	106mm x 31mm Suits tiles up to 12mm thick	DN80	1200mm



100MNDiCO20-0900	Complete stainless steel drainage unit with centre outlet. Marc Newson Design Grate <b>Finish:</b> Stainless Steel	106mm x 23mm	DN80	900mm
100MNDiCO20-1000	Complete stainless steel drainage unit with centre outlet. Marc Newson Design Grate <b>Finish:</b> Stainless Steel	106mm x 23mm	DN80	1000mm
100MNDiCO20-1200	Complete stainless steel drainage unit with centre outlet. Marc Newson Design Grate <b>Finish:</b> Stainless Steel	106mm x 23mm	DN80	1200mm
100MNDiCO20-1500	Complete stainless steel drainage unit with centre outlet. Marc Newson Design Grate <b>Finish:</b> Stainless Steel	106mm x 23mm	DN80	1500mm



100PSiCO20-0900	Complete stainless steel drainage unit with centre outlet. Punched Slot Grate <b>Finish:</b> Stainless Steel	106mm x 23mm	DN80	900mm
100PSiCO20-1000	Complete stainless steel drainage unit with centre outlet. Punched Slot Grate <b>Finish:</b> Stainless Steel	106mm x 23mm	DN80	1000mm
100PSiCO20-1200	Complete stainless steel drainage unit with centre outlet. Punched Slot Grate <b>Finish:</b> Stainless Steel	106mm x 23mm	DN80	1200mm
100PSiCO20-1500	Complete stainless steel drainage unit with centre outlet. Punched Slot Grate <b>Finish:</b> Stainless Steel	106mm x 23mm	DN80	1500mm

## Modular Kits All Stainless Steel

316 MARINE GRADE  
STAINLESS STEELOPTIONAL FINISHES  
SEE PAGE 49

PRODUCT CODE	KIT CONTENTS	WIDTH x DEPTH	OUTLET SIZE	LENGTH
<b>100ARi20-0900</b>	1 x 900mm Premium Architectural Grate 2mm wire / 2.5mm gap 1 x 1500mm Stainless Steel Channel with Punched Outlet 500mm from end 1 x Outlet Extender 2 x Stainless Steel End Caps <b>Finish:</b> Stainless Steel	106mm x 23mm	DN80 (default) DN50	Up to 900mm
<b>100ARi20-1000</b>	1 x 1000mm Premium Architectural Grate 2mm wire / 2.5mm gap 1 x 1500mm Stainless Steel Channel with Punched Outlet 500mm from end 1 x Outlet Extender 2 x Stainless Steel End Caps <b>Finish:</b> Stainless Steel	106mm x 23mm	DN80 (default) DN50	Up to 1000mm
<b>100ARi20-1200</b>	1 x 1200mm Premium Architectural Grate 2mm wire / 2.5mm gap 1 x 1800mm Stainless Steel Channel with Punched Outlet 600mm from end 1 x Outlet Extender 2 x Stainless Steel End Caps <b>Finish:</b> Stainless Steel	106mm x 23mm	DN80 (default) DN50	Up to 1200mm
<b>100ARi20-1500</b>	1 x 1500mm Premium Architectural Grate 2mm wire / 2.5mm gap 1 x 2400mm Stainless Steel Channel with Punched Outlet 800mm from end 1 x Outlet Extender 2 x Stainless Steel End Caps <b>Finish:</b> Stainless Steel	106mm x 23mm	DN80 (default) DN50	Up to 1500mm
<b>100ARi20-1800</b>	2 x 900mm Premium Architectural Grate 2mm wire / 2.5mm gap 1 x 3000mm Stainless Steel Channel with Punched Outlet 1000mm from end 1 x Outlet Extender 2 x Stainless Steel End Caps <b>Finish:</b> Stainless Steel	106mm x 23mm	DN80 (default) DN50	Up to 1800mm
<b>100ARi20-1900</b>	1 x 900mm Premium Architectural Grate 2mm wire / 2.5mm gap 1 x 1000mm Premium Architectural Grate 1 x 3000mm Stainless Steel Channel with Punched Outlet 1000mm from end 1 x Outlet Extender 2 x Stainless Steel End Caps <b>Finish:</b> Stainless Steel	106mm x 23mm	DN80 (default) DN50	Up to 1900mm
<b>100ARi20-2000</b>	2 x 1000mm Premium Architectural Grate 2mm wire / 2.5mm gap 1 x 3000mm Stainless Steel Channel with Punched Outlet 1000mm from end 1 x Outlet Extender 2 x Stainless Steel End Caps <b>Finish:</b> Stainless Steel	106mm x 23mm	DN80 (default) DN50	Up to 2000mm

## LONGER LENGTHS AVAILABLE ON REQUEST



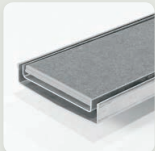
<b>100TRi20-0900</b>	1 x 900mm Standard Grate 3mm wire / 5mm gap 1 x 1500mm Stainless Steel Channel with Punched Outlet 500mm from end 1 x Outlet Extender 2 x Stainless Steel End Caps <b>Finish:</b> Stainless Steel	106mm x 23mm	DN80 (default) DN50	Up to 900mm
<b>100TRi20-1000</b>	1 x 1000mm Standard Grate 3mm wire / 5mm gap 1 x 1500mm Stainless Steel Channel with Punched Outlet 500mm from end 1 x Outlet Extender 2 x Stainless Steel End Caps <b>Finish:</b> Stainless Steel	106mm x 23mm	DN80 (default) DN50	Up to 1000mm

## Modular Kits All Stainless Steel

316 MARINE GRADE  
STAINLESS STEELOPTIONAL FINISHES  
SEE PAGE 49

PRODUCT CODE	KIT CONTENTS	WIDTH x DEPTH	OUTLET SIZE	LENGTH
100TRi20-1200	1 x 1200mm Standard Grate 3mm wire / 5mm gap 1 x 1800mm Stainless Steel Channel with Punched Outlet 600mm from end 1 x Outlet Extender 2 x Stainless Steel End Caps <b>Finish:</b> Stainless Steel	106mm x 23mm	DN80 (default) DN50	Up to 1200mm
100TRi20-1500	1 x 1500mm Standard Grate 3mm wire / 5mm gap 1 x 2400mm Stainless Steel Channel with Punched Outlet 800mm from end 1 x Outlet Extender 2 x Stainless Steel End Caps <b>Finish:</b> Stainless Steel	106mm x 23mm	DN80 (default) DN50	Up to 1500mm
100TRi20-1800	2 x 900mm Standard Grate 3mm wire / 5mm gap 1 x 3000mm Stainless Steel Channel with Punched Outlet 1000mm from end 1 x Outlet Extender 2 x Stainless Steel End Caps <b>Finish:</b> Stainless Steel	106mm x 23mm	DN80 (default) DN50	Up to 1800mm
100TRi20-1900	1 x 900mm Standard Grate 3mm wire / 5mm gap 1 x 1000mm Standard Grate 1 x 3000mm Stainless Steel Channel with Punched Outlet 1000mm from end 1 x Outlet Extender 2 x Stainless Steel End Caps <b>Finish:</b> Stainless Steel	106mm x 23mm	DN80 (default) DN50	Up to 1900mm
100TRi20-2000	2 x 1000mm Standard Grate 3mm wire / 5mm gap 1 x 3000mm Stainless Steel Channel with Punched Outlet 1000mm from end 1 x Outlet Extender 2 x Stainless Steel End Caps <b>Finish:</b> Stainless Steel	106mm x 23mm	DN80 (default) DN50	Up to 2000mm

## LONGER LENGTHS AVAILABLE ON REQUEST



100Tii20-0900	1 x 900mm Tile Insert / 1.5mm thick 1 x 1500mm Stainless Steel Channel with Punched Outlet 500mm from end 1 x Outlet Extender 2 x Stainless Steel End Caps <b>Finish:</b> Stainless Steel	106mm x 23mm Suits tiles up to 10mm thick	DN80 (default) DN50	Up to 900mm
100Tii20-1000	1 x 1000mm Tile Insert / 1.5mm thick 1 x 1500mm Stainless Steel Channel with Punched Outlet 500mm from end 1 x Outlet Extender 2 x Stainless Steel End Caps <b>Finish:</b> Stainless Steel	106mm x 23mm Suits tiles up to 10mm thick	DN80 (default) DN50	Up to 1000mm
100Tii20-1200	1 x 1200mm Tile Insert / 1.5mm thick 1 x 1800mm Stainless Steel Channel with Punched Outlet 600mm from end 1 x Outlet Extender 2 x Stainless Steel End Caps <b>Finish:</b> Stainless Steel	106mm x 23mm Suits tiles up to 10mm thick	DN80 (default) DN50	Up to 1200mm
100Tii20-1800	2 x 900mm Tile Insert / 1.5mm thick 1 x 3000mm Stainless Steel Channel with Punched Outlet 1000mm from end 1 x Outlet Extender 2 x Stainless Steel End Caps <b>Finish:</b> Stainless Steel	106mm x 23mm Suits tiles up to 10mm thick	DN80 (default) DN50	Up to 1800mm
100Tii20-1900	1 x 900mm Tile Insert / 1.5mm thick 1 x 1000mm Tile Insert / 1.5mm thick 1 x 3000mm Stainless Steel Channel with Punched Outlet 1000mm from end 1 x Outlet Extender 2 x Stainless Steel End Caps <b>Finish:</b> Stainless Steel	106mm x 23mm Suits tiles up to 10mm thick	DN80 (default) DN50	Up to 1900mm



## Modular Kits All Stainless Steel

316 MARINE GRADE  
STAINLESS STEELOPTIONAL FINISHES  
SEE PAGE 49

PRODUCT CODE	KIT CONTENTS	WIDTH x DEPTH	OUTLET SIZE	LENGTH
100Tii20-2000	2 x 1000mm Tile Insert / 1.5mm thick 1 x 3000mm Stainless Steel Channel with Punched Outlet 1000mm from end 1 x Outlet Extender 2 x Stainless Steel End Caps <b>Finish:</b> Stainless Steel	106mm x 23mm Suits tiles up to 10mm thick	DN80 (default) DN50	Up to 2000mm

## LONGER LENGTHS AVAILABLE ON REQUEST



100MNDi20-0900	1 x 900mm Marc Newson Design Grate 1 x 1500mm Stainless Steel Channel with Punched Outlet 500mm from end 1 x Outlet Extender 2 x Stainless Steel End Caps <b>Finish:</b> Stainless Steel	106mm x 23mm	DN80 (default) DN50	Up to 900mm
100MNDi20-1000	1 x 1000mm Marc Newson Design Grate 1 x 1500mm Stainless Steel Channel with Punched Outlet 500mm from end 1 x Outlet Extender 2 x Stainless Steel End Caps <b>Finish:</b> Stainless Steel	106mm x 23mm	DN80 (default) DN50	Up to 1000mm
100MNDi20-1200	1 x 1200mm Marc Newson Design Grate 1 x 1800mm Stainless Steel Channel with Punched Outlet 600mm from end 1 x Outlet Extender 2 x Stainless Steel End Caps <b>Finish:</b> Stainless Steel	106mm x 23mm	DN80 (default) DN50	Up to 1200mm
100MNDi20-1500	1 x 1500mm Marc Newson Design Grate 1 x 2400mm Stainless Steel Channel with Punched Outlet 800mm from end 1 x Outlet Extender 2 x Stainless Steel End Caps <b>Finish:</b> Stainless Steel	106mm x 23mm	DN80 (default) DN50	Up to 1500mm
100MNDi20-1800	2 x 900mm Marc Newson Design Grate 1 x 3000mm Stainless Steel Channel with Punched Outlet 1000mm from end 1 x Outlet Extender 2 x Stainless Steel End Caps <b>Finish:</b> Stainless Steel	106mm x 23mm	DN80 (default) DN50	Up to 1800mm
100MNDi20-1900	1 x 900mm Marc Newson Design Grate 1 x 1000mm Marc Newson Design Grate 1 x 3000mm Stainless Steel Channel with Punched Outlet 1000mm from end 1 x Outlet Extender 2 x Stainless Steel End Caps <b>Finish:</b> Stainless Steel	106mm x 23mm	DN80 (default) DN50	Up to 1900mm
100MNDi20-2000	2 x 1000mm Marc Newson Design Grate 1 x 3000mm Stainless Steel Channel with Punched Outlet 1000mm from end 1 x Outlet Extender 2 x Stainless Steel End Caps <b>Finish:</b> Stainless Steel	106mm x 23mm	DN80 (default) DN50	Up to 2000mm

## LONGER LENGTHS AVAILABLE ON REQUEST



100PSi20-0900	1 x 900mm Punched Slot Grate 1 x 1500mm Stainless Steel Channel with Punched Outlet 500mm from end 1 x Outlet Extender 2 x Stainless Steel End Caps <b>Finish:</b> Stainless Steel	106mm x 23mm	DN80 (default) DN50	Up to 900mm
100PSi20-1000	1 x 1000mm Punched Slot Grate 1 x 1500mm Stainless Steel Channel with Punched Outlet 500mm from end 1 x Outlet Extender 2 x Stainless Steel End Caps <b>Finish:</b> Stainless Steel	106mm x 23mm	DN80 (default) DN50	Up to 1000mm

## Modular Kits All Stainless Steel

316 MARINE GRADE  
STAINLESS STEELOPTIONAL FINISHES  
SEE PAGE 49

PRODUCT CODE	KIT CONTENTS	WIDTH x DEPTH	OUTLET SIZE	LENGTH
100PSi20-1200	1 x 1200mm Punched Slot Grate 1 x 1800mm Stainless Steel Channel with Punched Outlet 600mm from end 1 x Outlet Extender 2 x Stainless Steel End Caps <b>Finish:</b> Stainless Steel	106mm x 23mm	DN80 (default) DN50	Up to 1200mm
100PSi20-1500	1 x 1500mm Punched Slot Grate 1 x 2400mm Stainless Steel Channel with Punched Outlet 800mm from end 1 x Outlet Extender 2 x Stainless Steel End Caps <b>Finish:</b> Stainless Steel	106mm x 23mm	DN80 (default) DN50	Up to 1500mm
100PSi20-1800	2 x 900mm Punched Slot Grate 1 x 3000mm Stainless Steel Channel with Punched Outlet 1000mm from end 1 x Outlet Extender 2 x Stainless Steel End Caps <b>Finish:</b> Stainless Steel	106mm x 23mm	DN80 (default) DN50	Up to 1800mm
100PSi20-1900	1 x 900mm Punched Slot Grate 1 x 1000mm Punched Slot Grate 1 x 3000mm Stainless Steel Channel with Punched Outlet 1000mm from end 1 x Outlet Extender 2 x Stainless Steel End Caps <b>Finish:</b> Stainless Steel	106mm x 23mm	DN80 (default) DN50	Up to 1900mm
100PSi20-2000	2 x 1000mm Punched Slot Grate 1 x 3000mm Stainless Steel Channel with Punched Outlet 1000mm from end 1 x Outlet Extender 2 x Stainless Steel End Caps <b>Finish:</b> Stainless Steel	106mm x 23mm	DN80 (default) DN50	Up to 2000mm

LONGER LENGTHS AVAILABLE ON REQUEST

## Modular Kits uPVC Channel + Fittings

316 MARINE GRADE  
STAINLESS STEELOPTIONAL FINISHES  
SEE PAGE 49

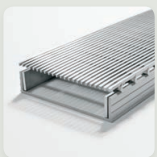
PRODUCT CODE	KIT CONTENTS	WIDTH x DEPTH	OUTLET SIZE	LENGTH
100ARG20-0900	1 x 900mm Premium Architectural Grate 2mm wire / 2.5mm gap 1 x Grey uPVC Channel (approx 1000mm) 1 x Outlet 2 x uPVC End Caps <b>Finish:</b> Stainless Steel (Grate Only)	106mm x 23mm	DN100 (default) DN40 / DN50 DN80	Up to 900mm
100ARG20-1000	1 x 1000mm Premium Architectural Grate 2mm wire / 2.5mm gap 1 x Grey uPVC Channel (approx 1100mm) 1 x Outlet 2 x uPVC End Caps <b>Finish:</b> Stainless Steel (Grate Only)	106mm x 23mm	DN100 (default) DN40 / DN50 DN80	Up to 1000mm
100ARG20-1200	1 x 1200mm Premium Architectural Grate 2mm wire / 2.5mm gap 1 x Grey uPVC Channel (approx 1300mm) 1 x Outlet 2 x uPVC End Caps <b>Finish:</b> Stainless Steel (Grate Only)	106mm x 23mm	DN100 (default) DN40 / DN50 DN80	Up to 1200mm
100ARG20-1500	1 x 1500mm Premium Architectural Grate 2mm wire / 2.5mm gap 1 x Grey uPVC Channel (approx 1600mm) 1 x Outlet 2 x uPVC End Caps <b>Finish:</b> Stainless Steel (Grate Only)	106mm x 23mm	DN100 (default) DN40 / DN50 DN80	Up to 1500mm
100ARG20-1800	2 x 900mm Premium Architectural Grate 2mm wire / 2.5mm gap 1 x Grey uPVC Channel (approx 1900mm) 1 x Outlet 2 x uPVC End Caps <b>Finish:</b> Stainless Steel (Grate Only)	106mm x 23mm	DN100 (default) DN40 / DN50 DN80	Up to 1800mm

## Modular Kits uPVC Channel + Fittings

316 MARINE GRADE  
STAINLESS STEELOPTIONAL FINISHES  
SEE PAGE 49

PRODUCT CODE	KIT CONTENTS	WIDTH x DEPTH	OUTLET SIZE	LENGTH
100ARG20-1900	1 x 900mm Premium Architectural Grate 2mm wire / 2.5mm gap 1 x 1000mm Premium Architectural Grate 1 x Grey uPVC Channel (approx 2000mm) 1 x Outlet 2 x uPVC End Caps <b>Finish:</b> Stainless Steel (Grate Only)	106mm x 23mm	DN100 (default) DN40 / DN50 DN80	Up to 1900mm
100ARG20-2000	2 x 1000mm Premium Architectural Grate 2mm wire / 2.5mm gap 1 x Grey uPVC Channel (approx 2100mm) 1 x Outlet 2 x uPVC End Caps <b>Finish:</b> Stainless Steel (Grate Only)	106mm x 23mm	DN100 (default) DN40 / DN50 DN80	Up to 2000mm
100ARG20-2200	1 x 1000mm Premium Architectural Grate 2mm wire / 2.5mm gap 1 x 1200mm Premium Architectural Grate 1 x Grey uPVC Channel (approx 2300mm) 2 x Outlets 2 x uPVC End Caps <b>Finish:</b> Stainless Steel (Grate Only)	106mm x 23mm	DN100 (default) DN40 / DN50 DN80	Up to 2200mm
100ARG20-2400	2 x 1200mm Premium Architectural Grate 2mm wire / 2.5mm gap 1 x Grey uPVC Channel (approx 2500mm) 2 x Outlets 2 x uPVC End Caps <b>Finish:</b> Stainless Steel (Grate Only)	106mm x 23mm	DN100 (default) DN40 / DN50 DN80	Up to 2400mm
100ARG20-2700	1 x 1500mm Premium Architectural Grate 2mm wire / 2.5mm gap 1 x 1200mm Premium Architectural Grate 1 x Grey uPVC Channel (approx 2800mm) 2 x Outlets 2 x uPVC End Caps <b>Finish:</b> Stainless Steel (Grate Only)	106mm x 23mm	DN100 (default) DN40 / DN50 DN80	Up to 2700mm
100ARG20-3000	2 x 1500mm Premium Architectural Grate 2mm wire / 2.5mm gap 1 x Grey uPVC Channel (approx 3000mm) 2 x Outlets 2 x uPVC End Caps <b>Finish:</b> Stainless Steel (Grate Only)	106mm x 23mm	DN100 (default) DN40 / DN50 DN80	Up to 3000mm

LONGER LENGTHS AVAILABLE ON REQUEST

CHANNEL OVERLAY  
GRATE COVERS CHANNEL

100ARG30-0900	1 x 900mm Premium Architectural Grate 2mm wire / 2.5mm gap 1 x Grey uPVC Channel (approx 1000mm) 1 x Outlet 2 x uPVC End Caps <b>Overlay Style:</b> Grate sits above channel <b>Finish:</b> Stainless Steel (Grate Only)	106mm x 32mm	DN100 (default) DN40 / DN50 DN80	Up to 900mm
100ARG30-1000	1 x 1000mm Premium Architectural Grate 2mm wire / 2.5mm gap 1 x Grey uPVC Channel (approx 1100mm) 1 x Outlet 2 x uPVC End Caps <b>Overlay Style:</b> Grate sits above channel <b>Finish:</b> Stainless Steel (Grate Only)	106mm x 32mm	DN100 (default) DN40 / DN50 DN80	Up to 1000mm
100ARG30-1200	1 x 1200mm Premium Architectural Grate 2mm wire / 2.5mm gap 1 x Grey uPVC Channel (approx 1300mm) 1 x Outlet 2 x uPVC End Caps <b>Overlay Style:</b> Grate sits above channel <b>Finish:</b> Stainless Steel (Grate Only)	106mm x 32mm	DN100 (default) DN40 / DN50 DN80	Up to 1200mm

## Modular Kits uPVC Channel + Fittings

316 MARINE GRADE  
STAINLESS STEELOPTIONAL FINISHES  
SEE PAGE 49

PRODUCT CODE	KIT CONTENTS	WIDTH x DEPTH	OUTLET SIZE	LENGTH
100ARG30-1500	1 x 1500mm Premium Architectural Grate 2mm wire / 2.5mm gap 1 x Grey uPVC Channel (approx 1600mm) 1 x Outlet 2 x uPVC End Caps <b>Overlay Style: Grate sits above channel</b> <b>Finish: Stainless Steel (Grate Only)</b>	106mm x 32mm	DN100 (default) DN40 / DN50 DN80	Up to 1500mm
100ARG30-1800	2 x 900mm Premium Architectural Grate 2mm wire / 2.5mm gap 1 x Grey uPVC Channel (approx 1900mm) 1 x Outlet 2 x uPVC End Caps <b>Overlay Style: Grate sits above channel</b> <b>Finish: Stainless Steel (Grate Only)</b>	106mm x 32mm	DN100 (default) DN40 / DN50 DN80	Up to 1800mm
100ARG30-1900	1 x 900mm Premium Architectural Grate 2mm wire / 2.5mm gap 1 x 1000mm Premium Architectural Grate 1 x Grey uPVC Channel (approx 2000mm) 1 x Outlet 2 x uPVC End Caps <b>Overlay Style: Grate sits above channel</b> <b>Finish: Stainless Steel (Grate Only)</b>	106mm x 32mm	DN100 (default) DN40 / DN50 DN80	Up to 1900mm
100ARG30-2000	2 x 1000mm Premium Architectural Grate 2mm wire / 2.5mm gap 1 x Grey uPVC Channel (approx 2100mm) 1 x Outlet 2 x uPVC End Caps <b>Overlay Style: Grate sits above channel</b> <b>Finish: Stainless Steel (Grate Only)</b>	106mm x 32mm	DN100 (default) DN40 / DN50 DN80	Up to 2000mm
100ARG30-2200	1 x 1000mm Premium Architectural Grate 2mm wire / 2.5mm gap 1 x 1200mm Premium Architectural Grate 1 x Grey uPVC Channel (approx 2300mm) 2 x Outlets 2 x uPVC End Caps <b>Overlay Style: Grate sits above channel</b> <b>Finish: Stainless Steel (Grate Only)</b>	106mm x 32mm	DN100 (default) DN40 / DN50 DN80	Up to 2200mm
100ARG30-2400	2 x 1200mm Premium Architectural Grate 2mm wire / 2.5mm gap 1 x Grey uPVC Channel (approx 2500mm) 2 x Outlets 2 x uPVC End Caps <b>Overlay Style: Grate sits above channel</b> <b>Finish: Stainless Steel (Grate Only)</b>	106mm x 32mm	DN100 (default) DN40 / DN50 DN80	Up to 2400mm
100ARG30-2700	1 x 1500mm Premium Architectural Grate 2mm wire / 2.5mm gap 1 x 1200mm Premium Architectural Grate 1 x Grey uPVC Channel (approx 2800mm) 2 x Outlets 2 x uPVC End Caps <b>Overlay Style: Grate sits above channel</b> <b>Finish: Stainless Steel (Grate Only)</b>	106mm x 32mm	DN100 (default) DN40 / DN50 DN80	Up to 2700mm
100ARG30-3000	2 x 1500mm Premium Architectural Grate 2mm wire / 2.5mm gap 1 x Grey uPVC Channel (approx 3000mm) 2 x Outlets 2 x uPVC End Caps <b>Overlay Style: Grate sits above channel</b> <b>Finish: Stainless Steel (Grate Only)</b>	106mm x 32mm	DN100 (default) DN40 / DN50 DN80	Up to 3000mm

LONGER LENGTHS AVAILABLE ON REQUEST

## Modular Kits uPVC Channel + Fittings

316 MARINE GRADE  
STAINLESS STEELOPTIONAL FINISHES  
SEE PAGE 49

PRODUCT CODE	KIT CONTENTS	WIDTH x DEPTH	OUTLET SIZE	LENGTH
100TRG20-0900	1 x 900mm Standard Grate 3mm wire / 5mm gap 1 x Grey uPVC Channel (approx 1000mm) 1 x Outlet 2 x uPVC End Caps <b>Finish:</b> Stainless Steel (Grate Only)	106mm x 23mm	DN100 (default) DN40 / DN50 DN80	Up to 900mm
100TRG20-1000	1 x 1000mm Standard Grate 3mm wire / 5mm gap 1 x Grey uPVC Channel (approx 1100mm) 1 x Outlet 2 x uPVC End Caps <b>Finish:</b> Stainless Steel (Grate Only)	106mm x 23mm	DN100 (default) DN40 / DN50 DN80	Up to 1000mm
100TRG20-1200	1 x 1200mm Standard Grate 3mm wire / 5mm gap 1 x Grey uPVC Channel (approx 1300mm) 1 x Outlet 2 x uPVC End Caps <b>Finish:</b> Stainless Steel (Grate Only)	106mm x 23mm	DN100 (default) DN40 / DN50 DN80	Up to 1200mm
100TRG20-1500	1 x 1500mm Standard Grate 3mm wire / 5mm gap 1 x Grey uPVC Channel (approx 1600mm) 1 x Outlet 2 x uPVC End Caps <b>Finish:</b> Stainless Steel (Grate Only)	106mm x 23mm	DN100 (default) DN40 / DN50 DN80	Up to 1500mm
100TRG20-1800	2 x 900mm Standard Grate 3mm wire / 5mm gap 1 x Grey uPVC Channel (approx 1900mm) 1 x Outlet 2 x uPVC End Caps <b>Finish:</b> Stainless Steel (Grate Only)	106mm x 23mm	DN100 (default) DN40 / DN50 DN80	Up to 1800mm
100TRG20-1900	1 x 900mm Standard Grate 3mm wire / 5mm gap 1 x 1000mm Standard Grate 1 x Grey uPVC Channel (approx 2000mm) 1 x Outlet 2 x uPVC End Caps <b>Finish:</b> Stainless Steel (Grate Only)	106mm x 23mm	DN100 (default) DN40 / DN50 DN80	Up to 1900mm
100TRG20-2000	2 x 1000mm Standard Grate 3mm wire / 5mm gap 1 x Grey uPVC Channel (approx 2100mm) 1 x Outlet 2 x uPVC End Caps <b>Finish:</b> Stainless Steel (Grate Only)	106mm x 23mm	DN100 (default) DN40 / DN50 DN80	Up to 2000mm
100TRG20-2200	1 x 1000mm Standard Grate 3mm wire / 5mm gap 1 x 1200mm Standard Grate 1 x Grey uPVC Channel (approx 2300mm) 2 x Outlets 2 x uPVC End Caps <b>Finish:</b> Stainless Steel (Grate Only)	106mm x 23mm	DN100 (default) DN40 / DN50 DN80	Up to 2200mm
100TRG20-2400	2 x 1200mm Standard Grate 3mm wire / 5mm gap 1 x Grey uPVC Channel (approx 2500mm) 2 x Outlets 2 x uPVC End Caps <b>Finish:</b> Stainless Steel (Grate Only)	106mm x 23mm	DN100 (default) DN40 / DN50 DN80	Up to 2400mm
100TRG20-2700	1 x 1500mm Standard Grate 3mm wire / 5mm gap 1 x 1200mm Standard Grate 1 x Grey uPVC Channel (approx 2800mm) 2 x Outlets 2 x uPVC End Caps <b>Finish:</b> Stainless Steel (Grate Only)	106mm x 23mm	DN100 (default) DN40 / DN50 DN80	Up to 2700mm
100TRG20-3000	2 x 1500mm Standard Grate 3mm wire / 5mm gap 1 x Grey uPVC Channel (approx 3000mm) 2 x Outlets 2 x uPVC End Caps <b>Finish:</b> Stainless Steel (Grate Only)	106mm x 23mm	DN100 (default) DN40 / DN50 DN80	Up to 3000mm

LONGER LENGTHS AVAILABLE ON REQUEST

## Modular Kits uPVC Channel + Fittings

316 MARINE GRADE  
STAINLESS STEELOPTIONAL FINISHES  
SEE PAGE 49

PRODUCT CODE	KIT CONTENTS	WIDTH x DEPTH	OUTLET SIZE	LENGTH
<b>100TiG20-0900</b>	1 x 900mm Tile Insert / 1.5mm thick 1 x Grey uPVC Channel (approx 1000mm) 1 x Outlet 2 x uPVC End Caps <b>Finish:</b> Stainless Steel (Grate Only)	106mm x 23mm Suits tiles up to 10mm thick	DN100 (default) DN40 / DN50 DN80	Up to 900mm
<b>100TiG20-1000</b>	1 x 1000mm Tile Insert / 1.5mm thick 1 x Grey uPVC Channel (approx 1100mm) 1 x Outlet 2 x uPVC End Caps <b>Finish:</b> Stainless Steel (Grate Only)	106mm x 23mm Suits tiles up to 10mm thick	DN100 (default) DN40 / DN50 DN80	Up to 1000mm
<b>100TiG20-1200</b>	1 x 1200mm Tile Insert / 1.5mm thick 1 x Grey uPVC Channel (approx 1300mm) 1 x Outlet 2 x uPVC End Caps <b>Finish:</b> Stainless Steel (Grate Only)	106mm x 23mm Suits tiles up to 10mm thick	DN100 (default) DN40 / DN50 DN80	Up to 1200mm
<b>100TiG20-1800</b>	2 x 900mm Tile Insert / 1.5mm thick 1 x Grey uPVC Channel (approx 1900mm) 1 x Outlet 2 x uPVC End Caps <b>Finish:</b> Stainless Steel (Grate Only)	106mm x 23mm Suits tiles up to 10mm thick	DN100 (default) DN40 / DN50 DN80	Up to 1800mm
<b>100TiG20-1900</b>	1 x 900mm Tile Insert / 1.5mm thick 1 x 1000mm Tile Insert / 1.5mm thick 1 x Grey uPVC Channel (approx 2000mm) 1 x Outlet 2 x uPVC End Caps <b>Finish:</b> Stainless Steel (Grate Only)	106mm x 23mm Suits tiles up to 10mm thick	DN100 (default) DN40 / DN50 DN80	Up to 1900mm
<b>100TiG20-2000</b>	2 x 1000mm Tile Insert / 1.5mm thick 1 x Grey uPVC Channel (approx 2100mm) 1 x Outlet 2 x uPVC End Caps <b>Finish:</b> Stainless Steel (Grate Only)	106mm x 23mm Suits tiles up to 10mm thick	DN100 (default) DN40 / DN50 DN80	Up to 2000mm
<b>100TiG20-2200</b>	1 x 1000mm Tile Insert / 1.5mm thick 1 x 1200mm Tile Insert / 1.5mm thick 1 x Grey uPVC Channel (approx 2300mm) 2 x Outlets 2 x uPVC End Caps <b>Finish:</b> Stainless Steel (Grate Only)	106mm x 23mm Suits tiles up to 10mm thick	DN100 (default) DN40 / DN50 DN80	Up to 2200mm
<b>100TiG20-2400</b>	2 x 1200mm Tile Insert / 1.5mm thick 1 x Grey uPVC Channel (approx 2500mm) 2 x Outlets 2 x uPVC End Caps <b>Finish:</b> Stainless Steel (Grate Only)	106mm x 23mm Suits tiles up to 10mm thick	DN100 (default) DN40 / DN50 DN80	Up to 2400mm
<b>100TiG20-2700</b>	3 x 900mm Tile Insert / 1.5mm thick 1 x Grey uPVC Channel (approx 2800mm) 2 x Outlets 2 x uPVC End Caps <b>Finish:</b> Stainless Steel (Grate Only)	106mm x 23mm Suits tiles up to 10mm thick	DN100 (default) DN40 / DN50 DN80	Up to 2700mm
<b>100TiG20-3000</b>	3 x 1000mm Tile Insert / 1.5mm thick 1 x Grey uPVC Channel (approx 3000mm) 2 x Outlets 2 x uPVC End Caps <b>Finish:</b> Stainless Steel (Grate Only)	106mm x 23mm Suits tiles up to 10mm thick	DN100 (default) DN40 / DN50 DN80	Up to 3000mm

## LONGER LENGTHS AVAILABLE ON REQUEST



<b>100MNDG20-0900</b>	1 x 900mm Marc Newson Design Grate 1 x Grey uPVC Channel (approx 1000mm) 1 x Outlet 2 x uPVC End Caps <b>Finish:</b> Stainless Steel (Grate Only)	106mm x 23mm	DN100 (default) DN40 / DN50 DN80	Up to 900mm
<b>100MNDG20-1000</b>	1 x 1000mm Marc Newson Design Grate 1 x Grey uPVC Channel (approx 1100mm) 1 x Outlet 2 x uPVC End Caps <b>Finish:</b> Stainless Steel (Grate Only)	106mm x 23mm	DN100 (default) DN40 / DN50 DN80	Up to 1000mm

## Modular Kits uPVC Channel + Fittings

316 MARINE GRADE  
STAINLESS STEELOPTIONAL FINISHES  
SEE PAGE 49

PRODUCT CODE	KIT CONTENTS	WIDTH x DEPTH	OUTLET SIZE	LENGTH
100MNDG20-1200	1 x 1200mm Marc Newson Design Grate 1 x Grey uPVC Channel (approx 1300mm) 1 x Outlet 2 x uPVC End Caps <b>Finish:</b> Stainless Steel (Grate Only)	106mm x 23mm	DN100 (default) DN40 / DN50 DN80	Up to 1200mm
100MNDG20-1500	1 x 1500mm Marc Newson Design Grate 1 x Grey uPVC Channel (approx 1600mm) 1 x Outlet 2 x uPVC End Caps <b>Finish:</b> Stainless Steel (Grate Only)	106mm x 23mm	DN100 (default) DN40 / DN50 DN80	Up to 1500mm
100MNDG20-1800	2 x 900mm Standard Grate 1 x Grey uPVC Channel (approx 1900mm) 1 x Outlet 2 x uPVC End Caps <b>Finish:</b> Stainless Steel (Grate Only)	106mm x 23mm	DN100 (default) DN40 / DN50 DN80	Up to 1800mm
100MNDG20-1900	1 x 900mm Marc Newson Design Grate 1 x 1000mm Marc Newson Design Grate 1 x Grey uPVC Channel (approx 2000mm) 1 x Outlet 2 x uPVC End Caps <b>Finish:</b> Stainless Steel (Grate Only)	106mm x 23mm	DN100 (default) DN40 / DN50 DN80	Up to 1900mm
100MNDG20-2000	2 x 1000mm Marc Newson Design Grate 1 x Grey uPVC Channel (approx 2100mm) 1 x Outlet 2 x uPVC End Caps <b>Finish:</b> Stainless Steel (Grate Only)	106mm x 23mm	DN100 (default) DN40 / DN50 DN80	Up to 2000mm
100MNDG20-2200	1 x 1000mm Marc Newson Design Grate 1 x 1200mm Marc Newson Design Grate 1 x Grey uPVC Channel (approx 2300mm) 2 x Outlets 2 x uPVC End Caps <b>Finish:</b> Stainless Steel (Grate Only)	106mm x 23mm	DN100 (default) DN40 / DN50 DN80	Up to 2200mm
100MNDG20-2400	2 x 1200mm Marc Newson Design Grate 1 x Grey uPVC Channel (approx 2500mm) 2 x Outlets 2 x uPVC End Caps <b>Finish:</b> Stainless Steel (Grate Only)	106mm x 23mm	DN100 (default) DN40 / DN50 DN80	Up to 2400mm
100MNDG20-2700	3 x 900mm Marc Newson Design Grate 1 x Grey uPVC Channel (approx 2800mm) 2 x Outlets 2 x uPVC End Caps <b>Finish:</b> Stainless Steel (Grate Only)	106mm x 23mm	DN100 (default) DN40 / DN50 DN80	Up to 2700mm
100MNDG20-3000	2 x 1500mm Marc Newson Design Grate 1 x Grey uPVC Channel (approx 3000mm) 2 x Outlets 2 x uPVC End Caps <b>Finish:</b> Stainless Steel (Grate Only)	106mm x 23mm	DN100 (default) DN40 / DN50 DN80	Up to 3000mm

## LONGER LENGTHS AVAILABLE ON REQUEST



100PSG20-0900	1 x 900mm Punched Slot Grate 1 x Grey uPVC Channel (approx 1000mm) 1 x Outlet 2 x uPVC End Caps 1 x Bracket for Punched Slot Grate <b>Finish:</b> Stainless Steel (Grate Only)	106mm x 23mm	DN100 (default) DN40 / DN50 DN80	Up to 900mm
100PSG20-1000	1 x 1000mm Punched Slot Grate 1 x Grey uPVC Channel (approx 1100mm) 1 x Outlet 2 x uPVC End Caps 1 x Bracket for Punched Slot Grate <b>Finish:</b> Stainless Steel (Grate Only)	106mm x 23mm	DN100 (default) DN40 / DN50 DN80	Up to 1000mm
100PSG20-1200	1 x 1200mm Punched Slot Grate 1 x Grey uPVC Channel (approx 1300mm) 1 x Outlet 2 x uPVC End Caps 1 x Bracket for Punched Slot Grate <b>Finish:</b> Stainless Steel (Grate Only)	106mm x 23mm	DN100 (default) DN40 / DN50 DN80	Up to 1200mm

## Modular Kits uPVC Channel + Fittings

316 MARINE GRADE  
STAINLESS STEELOPTIONAL FINISHES  
SEE PAGE 49

PRODUCT CODE	KIT CONTENTS	WIDTH x DEPTH	OUTLET SIZE	LENGTH
100PSG20-1500	1 x 1500mm Punched Slot Grate 1 x Grey uPVC Channel (approx 1600mm) 1 x Outlet 2 x uPVC End Caps 1 x Bracket for Punched Slot Grate <b>Finish:</b> Stainless Steel (Grate Only)	106mm x 23mm	DN100 (default) DN40 / DN50 DN80	Up to 1500mm
100PSG20-1800	2 x 900mm Punched Slot Grate 1 x Grey uPVC Channel (approx 1900mm) 1 x Outlet 2 x uPVC End Caps 1 x Bracket for Punched Slot Grate <b>Finish:</b> Stainless Steel (Grate Only)	106mm x 23mm	DN100 (default) DN40 / DN50 DN80	Up to 1800mm
100PSG20-1900	1 x 900mm Punched Slot Grate 1 x 1000mm Punched Slot Grate 1 x Grey uPVC Channel (approx 2000mm) 1 x Outlet 2 x uPVC End Caps 1 x Bracket for Punched Slot Grate <b>Finish:</b> Stainless Steel (Grate Only)	106mm x 23mm	DN100 (default) DN40 / DN50 DN80	Up to 1900mm
100PSG20-2000	2 x 1000mm Punched Slot Grate 1 x Grey uPVC Channel (approx 2100mm) 1 x Outlet 2 x uPVC End Caps 1 x Bracket for Punched Slot Grate <b>Finish:</b> Stainless Steel (Grate Only)	106mm x 23mm	DN100 (default) DN40 / DN50 DN80	Up to 2000mm
100PSG20-2200	1 x 1000mm Punched Slot Grate 1 x 1200mm Punched Slot Grate 1 x Grey uPVC Channel (approx 2300mm) 2 x Outlets 2 x uPVC End Caps 1 x Bracket for Punched Slot Grate <b>Finish:</b> Stainless Steel (Grate Only)	106mm x 23mm	DN100 (default) DN40 / DN50 DN80	Up to 2200mm
100PSG20-2400	2 x 1200mm Punched Slot Grate 1 x Grey uPVC Channel (approx 2500mm) 2 x Outlets 2 x uPVC End Caps 1 x Bracket for Punched Slot Grate <b>Finish:</b> Stainless Steel (Grate Only)	106mm x 23mm	DN100 (default) DN40 / DN50 DN80	Up to 2400mm
100PSG20-2700	3 x 900mm Punched Slot Grate 1 x Grey uPVC Channel (approx 2800mm) 2 x Outlets 2 x uPVC End Caps 1 x Bracket for Punched Slot Grate <b>Finish:</b> Stainless Steel (Grate Only)	106mm x 23mm	DN100 (default) DN40 / DN50 DN80	Up to 2700mm
100PSG20-3000	2 x 1500mm Punched Slot Grate 1 x Grey uPVC Channel (approx 3000mm) 2 x Outlets 2 x uPVC End Caps 1 x Bracket for Punched Slot Grate <b>Finish:</b> Stainless Steel (Grate Only)	106mm x 23mm	DN100 (default) DN40 / DN50 DN80	Up to 3000mm

LONGER LENGTHS AVAILABLE ON REQUEST



# 65 Range

- ✓ 65mm Grate Width
- ✓ 27mm - 42mm Channel Depth
- ✓ Stainless Steel or uPVC Drainage Channel
- ✓ Floor + Wall Flange Options

Made-to-Length Depth: 27mm - 42mm

316 MARINE GRADE  
STAINLESS STEEL





OPTIONAL FINISHES  
SEE PAGE 49

	PRODUCT CODE	DESCRIPTION	WIDTH x DEPTH	OUTLET SIZE	LENGTH
	<b>65ARI25MTL</b>	All stainless steel drainage unit made to length with specified outlet position. Premium Architectural Grate 2mm wire / 2.5mm gap <b>Finish:</b> Stainless Steel	74mm x 27mm	DN40 / DN50 DN65	As Required
	<b>65TRI25MTL</b>	All stainless steel drainage unit made to length with specified outlet position. Standard Grate 3mm wire / 5mm gap <b>Finish:</b> Stainless Steel	74mm x 27mm	DN40 / DN50 DN65	As Required
	<b>65Tii25MTL</b>	All stainless steel drainage unit made to length with specified outlet position. Tile Insert / 1.5mm thick <b>Finish:</b> Stainless Steel	74mm x 27mm Suits tiles up to 10mm thick	DN40 / DN50 DN65	As Required
	<b>65MNDi25MTL</b>	All stainless steel drainage unit made to length with specified outlet position. Marc Newson Design Grate <b>Finish:</b> Stainless Steel	74mm x 27mm	DN40 / DN50 DN65	As Required
	<b>65PSi25MTL</b>	All stainless steel drainage unit made to length with specified outlet position. Punched Slot Grate <b>Finish:</b> Stainless Steel	74mm x 27mm	DN40 / DN50 DN65	As Required
	<b>65FTi25MTL</b>	All stainless steel drainage unit made to length with specified outlet position. Flat Top Grate <b>Finish:</b> Stainless Steel	74mm x 27mm	DN40 / DN50 DN65	As Required
	<b>65Tii30MTL</b>	All stainless steel drainage unit made to length with specified outlet position. Tile Insert / 3mm thick <b>Finish:</b> Stainless Steel	74mm x 31mm Suits tiles up to 12mm thick	DN40 / DN50 DN65	As Required

**Made-to-Length** Depth: 27mm – 42mm

**316 MARINE GRADE**  
STAINLESS STEEL

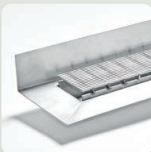
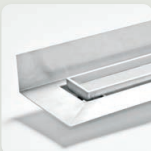
**OPTIONAL FINISHES**  
SEE PAGE 49

	PRODUCT CODE	DESCRIPTION	WIDTH x DEPTH	OUTLET SIZE	LENGTH
	<b>65ARi40MTL</b>	All stainless steel drainage unit made to length with specified outlet position. Premium Architectural Grate 2mm wire / 2.5mm gap <b>Finish:</b> Stainless Steel	74mm x 42mm	DN40 / DN50 DN65	As Required
	<b>65TRi40MTL</b>	All stainless steel drainage unit made to length with specified outlet position. Standard grate 3mm wire / 5mm gap <b>Finish:</b> Stainless Steel	74mm x 42mm	DN40 / DN50 DN65	As Required
	<b>65Ti40MTL</b>	All stainless steel drainage unit made to length with specified outlet position. Tile Insert / 3mm thick <b>Finish:</b> Stainless Steel	74mm x 42mm Suits tiles up to 25mm thick	DN40 / DN50 DN65	As Required
	<b>65PSi40MTL</b>	All stainless steel drainage unit made to length with specified outlet position. Punched Slot Grate <b>Finish:</b> Stainless Steel	74mm x 42mm	DN40 / DN50 DN65	As Required

**Made-to-Length** With Wall / Floor Flange

**316 MARINE GRADE**  
STAINLESS STEEL

**OPTIONAL FINISHES**  
SEE PAGE 49

	PRODUCT CODE	DESCRIPTION	GRATE WIDTH	OUTLET SIZE	LENGTH
	<b>65ARiMTLF</b>	All stainless steel unit made to specific length with specified outlet position and specified floor and/or wall flanges. Premium Architectural Grate 2mm wire / 2.5mm gap <b>Finish:</b> Stainless Steel	Grate Width: 65mm + Flange	DN40 / DN50 DN65	As Required
	<b>65TRiMTLF</b>	All stainless steel unit made to specific length with specified outlet position and specified floor and/or wall flanges. Standard Grate 3mm wire / 5mm gap <b>Finish:</b> Stainless Steel	Grate Width: 65mm + Flange	DN40 / DN50 DN65	As Required
	<b>65TiMTLF</b>	All stainless steel unit made to specific length with specified outlet position and specified floor and/or wall flanges. Tile Insert <b>Finish:</b> Stainless Steel	Grate Width: 65mm + Flange Suits tiles up to 25mm thick	DN40 / DN50 DN65	As Required
	<b>65PSiMTLF</b>	All stainless steel unit made to specific length with specified outlet position and specified floor and/or wall flanges. Punched Slot Grate <b>Finish:</b> Stainless Steel	Grate Width: 65mm + Flange	DN40 / DN50 DN65	As Required

## Fixed-Length Units With Centre Outlet

316 MARINE GRADE  
STAINLESS STEELOPTIONAL FINISHES  
SEE PAGE 49

PRODUCT CODE	DESCRIPTION	WIDTH x DEPTH	OUTLET SIZE	LENGTH
<b>65ARiCO25-0900</b>	Complete stainless steel drainage unit with centre outlet. Premium Architectural Grate 2mm wire / 2.5mm gap <b>Finish:</b> Stainless Steel	74mm x 27mm	DN50	900mm
<b>65ARiCO25-1000</b>	Complete stainless steel drainage unit with centre outlet. Premium Architectural Grate 2mm wire / 2.5mm gap <b>Finish:</b> Stainless Steel	74mm x 27mm	DN50	1000mm
<b>65ARiCO25-1200</b>	Complete stainless steel drainage unit with centre outlet. Premium Architectural Grate 2mm wire / 2.5mm gap <b>Finish:</b> Stainless Steel	74mm x 27mm	DN50	1200mm
<b>65ARiCO25-1500</b>	Complete stainless steel drainage unit with centre outlet. Premium Architectural Grate 2mm wire / 2.5mm gap <b>Finish:</b> Stainless Steel	74mm x 27mm	DN50	1500mm



<b>65TRiCO25-0900</b>	Complete stainless steel drainage unit with centre outlet. Standard grate 3mm wire / 5mm gap <b>Finish:</b> Stainless Steel	74mm x 27mm	DN50	900mm
<b>65TRiCO25-1000</b>	Complete stainless steel drainage unit with centre outlet. Standard grate 3mm wire / 5mm gap <b>Finish:</b> Stainless Steel	74mm x 27mm	DN50	1000mm
<b>65TRiCO25-1200</b>	Complete stainless steel drainage unit with centre outlet. Standard grate 3mm wire / 5mm gap <b>Finish:</b> Stainless Steel	74mm x 27mm	DN50	1200mm
<b>65TRiCO25-1500</b>	Complete stainless steel drainage unit with centre outlet. Standard grate 3mm wire / 5mm gap <b>Finish:</b> Stainless Steel	74mm x 27mm	DN50	1500mm



<b>65TiCO25-0900</b>	Complete stainless steel drainage unit with centre outlet. Tile Insert / 1.5mm thick <b>Finish:</b> Stainless Steel	74mm x 27mm Suits tiles up to 10mm thick	DN50	900mm
<b>65TiCO25-1000</b>	Complete stainless steel drainage unit with centre outlet. Tile Insert / 1.5mm thick <b>Finish:</b> Stainless Steel	74mm x 27mm Suits tiles up to 10mm thick	DN50	1000mm
<b>65TiCO25-1200</b>	Complete stainless steel drainage unit with centre outlet. Tile Insert / 1.5mm thick <b>Finish:</b> Stainless Steel	74mm x 27mm Suits tiles up to 10mm thick	DN50	1200mm

## Fixed-Length Units With Centre Outlet

316 MARINE GRADE  
STAINLESS STEELOPTIONAL FINISHES  
SEE PAGE 41

PRODUCT CODE	DESCRIPTION	WIDTH x DEPTH	OUTLET SIZE	LENGTH
<b>65MNDiCO25-0900</b>	Complete stainless steel drainage unit with centre outlet. Marc Newson Design Grate <b>Finish:</b> Stainless Steel	74mm x 27mm	DN50	900mm
<b>65MNDiCO25-1000</b>	Complete stainless steel drainage unit with centre outlet. Marc Newson Design Grate <b>Finish:</b> Stainless Steel	74mm x 27mm	DN50	1000mm
<b>65MNDiCO25-1200</b>	Complete stainless steel drainage unit with centre outlet. Marc Newson Design Grate <b>Finish:</b> Stainless Steel	74mm x 27mm	DN50	1200mm
<b>65MNDiCO25-1500</b>	Complete stainless steel drainage unit with centre outlet. Marc Newson Design Grate <b>Finish:</b> Stainless Steel	74mm x 27mm	DN50	1500mm



<b>65PSiCO25-0900</b>	Complete stainless steel drainage unit with centre outlet. Punched Slot Grate <b>Finish:</b> Stainless Steel	74mm x 27mm	DN50	900mm
<b>65PSiCO25-1000</b>	Complete stainless steel drainage unit with centre outlet. Punched Slot Grate <b>Finish:</b> Stainless Steel	74mm x 27mm	DN50	1000mm
<b>65PSiCO25-1200</b>	Complete stainless steel drainage unit with centre outlet. Punched Slot Grate Stainless Steel Finish	74mm x 27mm	DN50	1200mm
<b>65PSiCO25-1500</b>	Complete stainless steel drainage unit with centre outlet. Punched Slot Grate <b>Finish:</b> Stainless Steel	74mm x 27mm	DN50	1500mm



<b>65TiCO30-0900</b>	Complete stainless steel drainage unit with centre outlet. Tile Insert / 3mm thick <b>Finish:</b> Stainless Steel	74mm x 31mm Suits tiles up to 12mm thick	DN50	900mm
<b>65TiCO30-1000</b>	Complete stainless steel drainage unit with centre outlet. Tile Insert / 3mm thick <b>Finish:</b> Stainless Steel	74mm x 31mm Suits tiles up to 12mm thick	DN50	1000mm
<b>65TiCO30-1200</b>	Complete stainless steel drainage unit with centre outlet. Tile Insert / 3mm thick <b>Finish:</b> Stainless Steel	74mm x 31mm Suits tiles up to 12mm thick	DN50	1200mm

## Modular Kits All Stainless Steel

316 MARINE GRADE  
STAINLESS STEELOPTIONAL FINISHES  
SEE PAGE 49

PRODUCT CODE	KIT CONTENTS	WIDTH x DEPTH	OUTLET SIZE	LENGTH
<b>65ARi25-0750</b>	1 x 750mm Premium Architectural Grate 2mm wire / 2.5mm gap 1 x 1500mm Stainless Steel Channel with Punched Outlet 500mm from end 1 x Outlet Extender 2 x Stainless Steel End Caps <b>Finish:</b> Stainless Steel	74mm x 27mm	DN50	Up to 750mm
<b>65ARi25-0900</b>	1 x 900mm Premium Architectural Grate 2mm wire / 2.5mm gap 1 x 1500mm Stainless Steel Channel with Punched Outlet 500mm from end 1 x Outlet Extender 2 x Stainless Steel End Caps <b>Finish:</b> Stainless Steel	74mm x 27mm	DN50	Up to 900mm
<b>65ARi25-1000</b>	1 x 1000mm Premium Architectural Grate 2mm wire / 2.5mm gap 1 x 1500mm Stainless Steel Channel with Punched Outlet 500mm from end 1 x Outlet Extender 2 x Stainless Steel End Caps <b>Finish:</b> Stainless Steel	74mm x 27mm	DN50	Up to 1000mm
<b>65ARi25-1200</b>	1 x 1200mm Premium Architectural Grate 2mm wire / 2.5mm gap 1 x 1800mm Stainless Steel Channel with Punched Outlet 600mm from end 1 x Outlet Extender 2 x Stainless Steel End Caps <b>Finish:</b> Stainless Steel	74mm x 27mm	DN50	Up to 1200mm
<b>65ARi25-1500</b>	1 x 1500mm Premium Architectural Grate 2mm wire / 2.5mm gap 1 x 2400mm Stainless Steel Channel with Punched Outlet 800mm from end 1 x Outlet Extender 2 x Stainless Steel End Caps <b>Finish:</b> Stainless Steel	74mm x 27mm	DN50	Up to 1500mm
<b>65ARi25-1800</b>	2 x 900mm Premium Architectural Grate 2mm wire / 2.5mm gap 1 x 3000mm Stainless Steel Channel with Punched Outlet 1000mm from end 1 x Outlet Extender 2 x Stainless Steel End Caps <b>Finish:</b> Stainless Steel	74mm x 27mm	DN50	Up to 1800mm
<b>65ARi25-1900</b>	1 x 900mm Premium Architectural Grate 2mm wire / 2.5mm gap 1 x 1000mm Premium Architectural Grate 1 x 3000mm Stainless Steel Channel with Punched Outlet 1000mm from end 1 x Outlet Extender 2 x Stainless Steel End Caps <b>Finish:</b> Stainless Steel	74mm x 27mm	DN50	Up to 1900mm
<b>65ARi25-2000</b>	2 x 1000mm Premium Architectural Grate 2mm wire / 2.5mm gap 1 x 3000mm Stainless Steel Channel with Punched Outlet 1000mm from end 1 x Outlet Extender 2 x Stainless Steel End Caps <b>Finish:</b> Stainless Steel	74mm x 27mm	DN50	Up to 2000mm

LONGER LENGTHS AVAILABLE ON REQUEST

## Modular Kits All Stainless Steel

316 MARINE GRADE  
STAINLESS STEELOPTIONAL FINISHES  
SEE PAGE 49

PRODUCT CODE	KIT CONTENTS	WIDTH x DEPTH	OUTLET SIZE	LENGTH
<b>65TRi25-0900</b>	1 x 900mm Standard Grate 3mm wire / 5mm gap 1 x 1500mm Stainless Steel Channel with Punched Outlet 500mm from end 1 x Outlet Extender 2 x Stainless Steel End Caps <b>Finish:</b> Stainless Steel	74mm x 27mm	DN50	Up to 900mm
<b>65TRi25-1000</b>	1 x 1000mm Standard Grate 3mm wire / 5mm gap 1 x 1500mm Stainless Steel Channel with Punched Outlet 500mm from end 1 x Outlet Extender 2 x Stainless Steel End Caps <b>Finish:</b> Stainless Steel	74mm x 27mm	DN50	Up to 1000mm
<b>65TRi25-1200</b>	1 x 1200mm Standard Grate 3mm wire / 5mm gap 1 x 1800mm Stainless Steel Channel with Punched Outlet 600mm from end 1 x Outlet Extender 2 x Stainless Steel End Caps <b>Finish:</b> Stainless Steel	74mm x 27mm	DN50	Up to 1200mm
<b>65TRi25-1500</b>	1 x 1500mm Standard Grate 3mm wire / 5mm gap 1 x 2400mm Stainless Steel Channel with Punched Outlet 800mm from end 1 x Outlet Extender 2 x Stainless Steel End Caps <b>Finish:</b> Stainless Steel	74mm x 27mm	DN50	Up to 1500mm
<b>65TRi25-1800</b>	2 x 900mm Standard Grate 3mm wire / 5mm gap 1 x 3000mm Stainless Steel Channel with Punched Outlet 1000mm from end 1 x Outlet Extender 2 x Stainless Steel End Caps <b>Finish:</b> Stainless Steel	74mm x 27mm	DN50	Up to 1800mm
<b>65TRi25-1900</b>	1 x 900mm Standard Grate 3mm wire / 5mm gap 1 x 1000mm Standard Grate 1 x 3000mm Stainless Steel Channel with Punched Outlet 1000mm from end 1 x Outlet Extender 2 x Stainless Steel End Caps <b>Finish:</b> Stainless Steel	74mm x 27mm	DN50	Up to 1900mm
<b>65TRi25-2000</b>	2 x 1000mm Standard Grate 3mm wire / 5mm gap 1 x 3000mm Stainless Steel Channel with Punched Outlet 1000mm from end 1 x Outlet Extender 2 x Stainless Steel End Caps <b>Finish:</b> Stainless Steel	74mm x 27mm	DN50	Up to 2000mm

## LONGER LENGTHS AVAILABLE ON REQUEST



<b>65Ti25-0900</b>	1 x 900mm Tile Insert / 1.5mm thick 1 x 1500mm Stainless Steel Channel with Punched Outlet 500mm from end 1 x Outlet Extender 2 x Stainless Steel End Caps <b>Finish:</b> Stainless Steel	74mm x 27mm Suits tiles up to 10mm thick	DN50	Up to 900mm
<b>65Ti25-1000</b>	1 x 1000mm Tile Insert / 1.5mm thick 1 x 1500mm Stainless Steel Channel with Punched Outlet 500mm from end 1 x Outlet Extender 2 x Stainless Steel End Caps <b>Finish:</b> Stainless Steel	74mm x 27mm Suits tiles up to 10mm thick	DN50	Up to 1000mm
<b>65Ti25-1200</b>	1 x 1200mm Tile Insert / 1.5mm thick 1 x 1800mm Stainless Steel Channel with Punched Outlet 600mm from end 1 x Outlet Extender 2 x Stainless Steel End Caps <b>Finish:</b> Stainless Steel	74mm x 27mm Suits tiles up to 10mm thick	DN50	Up to 1200mm

## Modular Kits All Stainless Steel

316 MARINE GRADE  
STAINLESS STEELOPTIONAL FINISHES  
SEE PAGE 49

PRODUCT CODE	KIT CONTENTS	WIDTH x DEPTH	OUTLET SIZE	LENGTH
65Ti25-1800	2 x 900mm Tile Insert / 1.5mm thick 1 x 3000mm Stainless Steel Channel with Punched Outlet 1000mm from end 1 x Outlet Extender 2 x Stainless Steel End Caps <b>Finish:</b> Stainless Steel	74mm x 27mm Suits tiles up to 10mm thick	DN50	Up to 1800mm
65Ti25-1900	1 x 900mm Tile Insert / 1.5mm thick 1 x 1000mm Tile Insert / 1.5mm thick 1 x 3000mm Stainless Steel Channel with Punched Outlet 1000mm from end 1 x Outlet Extender 2 x Stainless Steel End Caps <b>Finish:</b> Stainless Steel	74mm x 27mm Suits tiles up to 10mm thick	DN50	Up to 1900mm
65Ti25-2000	2 x 1000mm Tile Insert / 1.5mm thick 1 x 3000mm Stainless Steel Channel with Punched Outlet 1000mm from end 1 x Outlet Extender 2 x Stainless Steel End Caps <b>Finish:</b> Stainless Steel	74mm x 27mm Suits tiles up to 10mm thick	DN50	Up to 2000mm

## LONGER LENGTHS AVAILABLE ON REQUEST



65MNDi25-0900	1 x 900mm Marc Newson Design Grate 1 x 1500mm Stainless Steel Channel with Punched Outlet 500mm from end 1 x Outlet Extender 2 x Stainless Steel End Caps <b>Finish:</b> Stainless Steel	74mm x 27mm	DN50	Up to 900mm
65MNDi25-1000	1 x 1000mm Marc Newson Design Grate 1 x 1500mm Stainless Steel Channel with Punched Outlet 500mm from end 1 x Outlet Extender 2 x Stainless Steel End Caps <b>Finish:</b> Stainless Steel	74mm x 27mm	DN50	Up to 1000mm
65MNDi25-1200	1 x 1200mm Marc Newson Design Grate 1 x 1800mm Stainless Steel Channel with Punched Outlet 600mm from end 1 x Outlet Extender 2 x Stainless Steel End Caps <b>Finish:</b> Stainless Steel	74mm x 27mm	DN50	Up to 1200mm
65MNDi25-1500	1 x 1500mm Marc Newson Design Grate 1 x 2400mm Stainless Steel Channel with Punched Outlet 800mm from end 1 x Outlet Extender 2 x Stainless Steel End Caps <b>Finish:</b> Stainless Steel	74mm x 27mm	DN50	Up to 1500mm
65MNDi25-1800	2 x 900mm Marc Newson Design Grate 1 x 3000mm Stainless Steel Channel with Punched Outlet 1000mm from end 1 x Outlet Extender 2 x Stainless Steel End Caps <b>Finish:</b> Stainless Steel	74mm x 27mm	DN50	Up to 1800mm
65MNDi25-1900	1 x 900mm Marc Newson Design Grate 1 x 1000mm Marc Newson Design Grate 1 x 3000mm Stainless Steel Channel with Punched Outlet 1000mm from end 1 x Outlet Extender 2 x Stainless Steel End Caps <b>Finish:</b> Stainless Steel	74mm x 27mm	DN50	Up to 1900mm
65MNDi25-2000	2 x 1000mm Marc Newson Design Grate 1 x 3000mm Stainless Steel Channel with Punched Outlet 1000mm from end 1 x Outlet Extender 2 x Stainless Steel End Caps <b>Finish:</b> Stainless Steel	74mm x 27mm	DN50	Up to 2000mm

## LONGER LENGTHS AVAILABLE ON REQUEST

## Modular Kits All Stainless Steel

316 MARINE GRADE  
STAINLESS STEELOPTIONAL FINISHES  
SEE PAGE 49

PRODUCT CODE	KIT CONTENTS	WIDTH x DEPTH	OUTLET SIZE	LENGTH
<b>65PSi25-0900</b>	1 x 900mm Punched Slot Grate 1 x 1500mm Stainless Steel Channel with Punched Outlet 500mm from end 1 x Outlet Extender 2 x Stainless Steel End Caps <b>Finish:</b> Stainless Steel	74mm x 27mm	DN50	Up to 900mm
<b>65PSi25-1000</b>	1 x 1000mm Punched Slot Grate 1 x 1500mm Stainless Steel Channel with Punched Outlet 500mm from end 1 x Outlet Extender 2 x Stainless Steel End Caps <b>Finish:</b> Stainless Steel	74mm x 27mm	DN50	Up to 1000mm
<b>65PSi25-1200</b>	1 x 1200mm Punched Slot Grate 1 x 1800mm Stainless Steel Channel with Punched Outlet 600mm from end 1 x Outlet Extender 2 x Stainless Steel End Caps <b>Finish:</b> Stainless Steel	74mm x 27mm	DN50	Up to 1200mm
<b>65PSi25-1500</b>	1 x 1500mm Punched Slot Grate 1 x 2400mm Stainless Steel Channel with Punched Outlet 800mm from end 1 x Outlet Extender 2 x Stainless Steel End Caps <b>Finish:</b> Stainless Steel	74mm x 27mm	DN50	Up to 1500mm
<b>65PSi25-1800</b>	2 x 900mm Punched Slot Grate 1 x 3000mm Stainless Steel Channel with Punched Outlet 1000mm from end 1 x Outlet Extender 2 x Stainless Steel End Caps <b>Finish:</b> Stainless Steel	74mm x 27mm	DN50	Up to 1800mm
<b>65PSi25-1900</b>	1 x 900mm Punched Slot Grate 1 x 1000mm Punched Slot Grate 1 x 3000mm Stainless Steel Channel with Punched Outlet 1000mm from end 1 x Outlet Extender 2 x Stainless Steel End Caps <b>Finish:</b> Stainless Steel	74mm x 27mm	DN50	Up to 1900mm
<b>65PSi25-2000</b>	2 x 1000mm Punched Slot Grate 1 x 3000mm Stainless Steel Channel with Punched Outlet 1000mm from end 1 x Outlet Extender 2 x Stainless Steel End Caps <b>Finish:</b> Stainless Steel	74mm x 27mm	DN50	Up to 2000mm

## LONGER LENGTHS AVAILABLE ON REQUEST



<b>65ARi40-0900</b>	1 x 900mm Premium Architectural Grate 2mm wire / 2.5mm gap 1 x 1500mm Stainless Steel Channel with Punched Outlet 500mm from end 1 x Outlet Extender 2 x Stainless Steel End Caps <b>Finish:</b> Stainless Steel	74mm x 42mm	DN50	Up to 900mm
<b>65ARi40-1000</b>	1 x 1000mm Premium Architectural Grate 2mm wire / 2.5mm gap 1 x 1500mm Stainless Steel Channel with Punched Outlet 500mm from end 1 x Outlet Extender 2 x Stainless Steel End Caps <b>Finish:</b> Stainless Steel	74mm x 42mm	DN50	Up to 1000mm
<b>65ARi40-1200</b>	1 x 1200mm Premium Architectural Grate 2mm wire / 2.5mm gap 1 x 1800mm Stainless Steel Channel with Punched Outlet 600mm from end 1 x Outlet Extender 2 x Stainless Steel End Caps <b>Finish:</b> Stainless Steel	74mm x 42mm	DN50	Up to 1200mm



## Modular Kits All Stainless Steel

316 MARINE GRADE  
STAINLESS STEELOPTIONAL FINISHES  
SEE PAGE 49

PRODUCT CODE	KIT CONTENTS	WIDTH x DEPTH	OUTLET SIZE	LENGTH
65ARi40-1500	1 x 1500mm Premium Architectural Grate 2mm wire / 2.5mm gap 1 x 2400mm Stainless Steel Channel with Punched Outlet 800mm from end 1 x Outlet Extender 2 x Stainless Steel End Caps <b>Finish:</b> Stainless Steel	74mm x 42mm	DN50	Up to 1500mm
65ARi40-1800	2 x 900mm Premium Architectural Grate 2mm wire / 2.5mm gap 1 x 3000mm Stainless Steel Channel with Punched Outlet 1000mm from end 1 x Outlet Extender 2 x Stainless Steel End Caps <b>Finish:</b> Stainless Steel	74mm x 42mm	DN50	Up to 1800mm
65ARi40-1900	1 x 900mm Premium Architectural Grate 2mm wire / 2.5mm gap 1 x 1000mm Premium Architectural Grate 1 x 3000mm Stainless Steel Channel with Punched Outlet 1000mm from end 1 x Outlet Extender 2 x Stainless Steel End Caps <b>Finish:</b> Stainless Steel	74mm x 42mm	DN50	Up to 1900mm
65ARi40-2000	2 x 1000mm Premium Architectural Grate 2mm wire / 2.5mm gap 1 x 3000mm Stainless Steel Channel with Punched Outlet 1000mm from end 1 x Outlet Extender 2 x Stainless Steel End Caps <b>Finish:</b> Stainless Steel	74mm x 42mm	DN50	Up to 2000mm

## LONGER LENGTHS AVAILABLE ON REQUEST



65TRi40-0900	1 x 900mm Standard Grate 3mm wire / 5mm gap 1 x 1500mm Stainless Steel Channel with Punched Outlet 500mm from end 1 x Outlet Extender 2 x Stainless Steel End Caps <b>Finish:</b> Stainless Steel	74mm x 42mm	DN50	Up to 900mm
65TRi40-1000	1 x 1000mm Standard Grate 3mm wire / 5mm gap 1 x 1500mm Stainless Steel Channel with Punched Outlet 500mm from end 1 x Outlet Extender 2 x Stainless Steel End Caps <b>Finish:</b> Stainless Steel	74mm x 42mm	DN50	Up to 1000mm
65TRi40-1200	1 x 1200mm Standard Grate 3mm wire / 5mm gap 1 x 1800mm Stainless Steel Channel with Punched Outlet 600mm from end 1 x Outlet Extender 2 x Stainless Steel End Caps <b>Finish:</b> Stainless Steel	74mm x 42mm	DN50	Up to 1200mm
65TRi40-1500	1 x 1500mm Standard Grate 3mm wire / 5mm gap 1 x 2400mm Stainless Steel Channel with Punched Outlet 800mm from end 1 x Outlet Extender 2 x Stainless Steel End Caps <b>Finish:</b> Stainless Steel	74mm x 42mm	DN50	Up to 1500mm
65TRi40-1800	2 x 900mm Standard Grate 3mm wire / 5mm gap 1 x 3000mm Stainless Steel Channel with Punched Outlet 1000mm from end 1 x Outlet Extender 2 x Stainless Steel End Caps <b>Finish:</b> Stainless Steel	74mm x 42mm	DN50	Up to 1800mm

## Modular Kits All Stainless Steel

316 MARINE GRADE  
STAINLESS STEELOPTIONAL FINISHES  
SEE PAGE 49

PRODUCT CODE	KIT CONTENTS	WIDTH x DEPTH	OUTLET SIZE	LENGTH
65TRi40-1900	1 x 900mm Standard Grate 3mm wire / 5mm gap 1 x 1000mm Standard Grate 1 x 3000mm Stainless Steel Channel with Punched Outlet 1000mm from end 1 x Outlet Extender 2 x Stainless Steel End Caps <b>Finish:</b> Stainless Steel	74mm x 42mm	DN50	Up to 1900mm
65TRi40-2000	2 x 1000mm Standard Grate 3mm wire / 5mm gap 1 x 3000mm Stainless Steel Channel with Punched Outlet 1000mm from end 1 x Outlet Extender 2 x Stainless Steel End Caps <b>Finish:</b> Stainless Steel	74mm x 42mm	DN50	Up to 2000mm

## LONGER LENGTHS AVAILABLE ON REQUEST



65Ti40-1000	1 x 1000mm Tile Insert / 3mm thick 1 x 1500mm Stainless Steel Channel with Punched Outlet 500mm from end 1 x Outlet Extender 2 x Stainless Steel End Caps <b>Finish:</b> Stainless Steel	74mm x 42mm Suits tiles up to 25mm thick	DN50	Up to 1000mm
65Ti40-1200	1 x 1200mm Tile Insert / 3mm thick 1 x 1800mm Stainless Steel Channel with Punched Outlet 600mm from end 1 x Outlet Extender 2 x Stainless Steel End Caps <b>Finish:</b> Stainless Steel	74mm x 42mm Suits tiles up to 25mm thick	DN50	Up to 1200mm
65Ti40-2000	2 x 1000mm Tile Insert / 3mm thick 1 x 3000mm Stainless Steel Channel with Punched Outlet 1000mm from end 1 x Outlet Extender 2 x Stainless Steel End Caps <b>Finish:</b> Stainless Steel	74mm x 42mm Suits tiles up to 25mm thick	DN50	Up to 2000mm

## LONGER LENGTHS AVAILABLE ON REQUEST



65PSi40-0900	1 x 900mm Punched Slot Grate 1 x 1500mm Stainless Steel Channel with Punched Outlet 500mm from end 1 x Outlet Extender 2 x Stainless Steel End Caps <b>Finish:</b> Stainless Steel	74mm x 42mm	DN50	Up to 900mm
65PSi40-1000	1 x 1000mm Punched Slot Grate 1 x 1500mm Stainless Steel Channel with Punched Outlet 500mm from end 1 x Outlet Extender 2 x Stainless Steel End Caps <b>Finish:</b> Stainless Steel	74mm x 42mm	DN50	Up to 1000mm
65PSi40-1200	1 x 1200mm Punched Slot Grate 1 x 1800mm Stainless Steel Channel Punched Outlet 600mm from end 1 x Outlet Extender 2 x Stainless Steel End Caps <b>Finish:</b> Stainless Steel	74mm x 42mm	DN50	Up to 1200mm
65PSi40-1500	1 x 1500mm Punched Slot Grate 1 x 2400mm Stainless Steel Channel with Punched Outlet 800mm from end 1 x Outlet Extender 2 x Stainless Steel End Caps <b>Finish:</b> Stainless Steel	74mm x 42mm	DN50	Up to 1500mm
65PSi40-1800	2 x 900mm Punched Slot Grate 1 x 3000mm Stainless Steel Channel with Punched Outlet 1000mm from end 1 x Outlet Extender 2 x Stainless Steel End Caps <b>Finish:</b> Stainless Steel	74mm x 42mm	DN50	Up to 1800mm

## Modular Kits All Stainless Steel

316 MARINE GRADE  
STAINLESS STEELOPTIONAL FINISHES  
SEE PAGE 49

PRODUCT CODE	KIT CONTENTS	WIDTH x DEPTH	OUTLET SIZE	LENGTH
65PSi40-1900	1 x 900mm Punched Slot Grate 1 x 1000mm Punched Slot Grate 1 x 3000mm Stainless Steel Channel with Punched Outlet 1000mm from end 1 x Outlet Extender 2 x Stainless Steel End Caps <b>Finish:</b> Stainless Steel	74mm x 42mm	DN50	Up to 1900mm
65PSi40-2000	2 x 1000mm Punched Slot Grate 1 x 3000mm Stainless Steel Channel with Punched Outlet 1000mm from end 1 x Outlet Extender 2 x Stainless Steel End Caps <b>Finish:</b> Stainless Steel	74mm x 42mm	DN50	Up to 2000mm

LONGER LENGTHS AVAILABLE ON REQUEST

## Modular Kits uPVC Channel + Fittings

316 MARINE GRADE  
STAINLESS STEELOPTIONAL FINISHES  
SEE PAGE 49

PRODUCT CODE	KIT CONTENTS	WIDTH x DEPTH	OUTLET SIZE	LENGTH
65ARG25-0750	1 x 750mm Premium Architectural Grate 2mm wire / 2.5mm gap 1 x Grey uPVC Channel (approx 900mm) 1 x Outlet 2 x uPVC End Caps <b>Finish:</b> Stainless Steel (Grate Only)	74mm x 27mm	DN50 (default) DN40	Up to 750mm
65ARG25-0900	1 x 900mm Premium Architectural Grate 2mm wire / 2.5mm gap 1 x Grey uPVC Channel (approx 1000mm) 1 x Outlet 2 x uPVC End Caps <b>Finish:</b> Stainless Steel (Grate Only)	74mm x 27mm	DN50 (default) DN40	Up to 900mm
65ARG25-1000	1 x 1000mm Premium Architectural Grate 2mm wire / 2.5mm gap 1 x Grey uPVC Channel (approx 1100mm) 1 x Outlet 2 x uPVC End Caps <b>Finish:</b> Stainless Steel (Grate Only)	74mm x 27mm	DN50 (default) DN40	Up to 1000mm
65ARG25-1200	1 x 1200mm Premium Architectural Grate 2mm wire / 2.5mm gap 1 x Grey uPVC Channel (approx 1300mm) 1 x Outlet 2 x uPVC End Caps <b>Finish:</b> Stainless Steel (Grate Only)	74mm x 27mm	DN50 (default) DN40	Up to 1200mm
65ARG25-1500	1 x 1500mm Premium Architectural Grate 2mm wire / 2.5mm gap 1 x Grey uPVC Channel (approx 1600mm) 2 x Outlets 2 x uPVC End Caps <b>Finish:</b> Stainless Steel (Grate Only)	74mm x 27mm	DN50 (default) DN40	Up to 1500mm
65ARG25-1800	2 x 900mm Premium Architectural Grate 2mm wire / 2.5mm gap 1 x Grey uPVC Channel (approx 1900mm) 2 x Outlets 2 x uPVC End Caps <b>Finish:</b> Stainless Steel (Grate Only)	74mm x 27mm	DN50 (default) DN40	Up to 1800mm
65ARG25-1900	1 x 900mm Premium Architectural Grate 2mm wire / 2.5mm gap 1 x 1000mm Premium Architectural Grate 1 x Grey uPVC Channel (approx 2000mm) 2 x Outlets 2 x uPVC End Caps <b>Finish:</b> Stainless Steel (Grate Only)	74mm x 27mm	DN50 (default) DN40	Up to 1900mm

## Modular Kits uPVC Channel + Fittings

316 MARINE GRADE  
STAINLESS STEELOPTIONAL FINISHES  
SEE PAGE 49

PRODUCT CODE	KIT CONTENTS	WIDTH x DEPTH	OUTLET SIZE	LENGTH
65ARG25-2000	2 x 1000mm Premium Architectural Grate 2mm wire / 2.5mm gap 1 x Grey uPVC Channel (approx 2100mm) 2 x Outlets 2 x uPVC End Caps <b>Finish:</b> Stainless Steel (Grate Only)	74mm x 27mm	DN50 (default) DN40	Up to 2000mm
65ARG25-2200	1 x 1000mm Premium Architectural Grate 2mm wire / 2.5mm gap 1 x 1200mm Premium Architectural Grate 1 x Grey uPVC Channel (approx 2300mm) 3 x Outlets 2 x uPVC End Caps <b>Finish:</b> Stainless Steel (Grate Only)	74mm x 27mm	DN50 (default) DN40	Up to 2200mm
65ARG25-2400	2 x 1200mm Premium Architectural Grate 2mm wire / 2.5mm gap 1 x Grey uPVC Channel (approx 2500mm) 3 x Outlets 2 x uPVC End Caps <b>Finish:</b> Stainless Steel (Grate Only)	74mm x 27mm	DN50 (default) DN40	Up to 2400mm
65ARG25-2700	1 x 1500mm Premium Architectural Grate 2mm wire / 2.5mm gap 1 x 1200mm Premium Architectural Grate 1 x Grey uPVC Channel (approx 2800mm) 3 x Outlets 2 x uPVC End Caps <b>Finish:</b> Stainless Steel (Grate Only)	74mm x 27mm	DN50 (default) DN40	Up to 2700mm
65ARG25-3000	2 x 1500mm Premium Architectural Grate 2mm wire / 2.5mm gap 1 x Grey uPVC Channel (approx 3000mm) 3 x Outlets 2 x uPVC End Caps <b>Finish:</b> Stainless Steel (Grate Only)	74mm x 27mm	DN50 (default) DN40	Up to 3000mm

## LONGER LENGTHS AVAILABLE ON REQUEST



65TRG25-0900	1 x 900mm Standard Grate 3mm wire / 5mm gap 1 x Grey uPVC Channel (approx 1000mm) 1 x Outlet 2 x uPVC End Caps <b>Finish:</b> Stainless Steel (Grate Only)	74mm x 27mm	DN50 (default) DN40	Up to 900mm
65TRG25-1000	1 x 1000mm Standard Grate 3mm wire / 5mm gap 1 x Grey uPVC Channel (approx 1100mm) 1 x Outlet 2 x uPVC End Caps <b>Finish:</b> Stainless Steel (Grate Only)	74mm x 27mm	DN50 (default) DN40	Up to 1000mm
65TRG25-1200	1 x 1200mm Standard Grate 3mm wire / 5mm gap 1 x Grey uPVC Channel (approx 1300mm) 1 x Outlet 2 x uPVC End Caps <b>Finish:</b> Stainless Steel (Grate Only)	74mm x 27mm	DN50 (default) DN40	Up to 1200mm
65TRG25-1500	1 x 1500mm Standard Grate 3mm wire / 5mm gap 1 x Grey uPVC Channel (approx 1600mm) 2 x Outlets 2 x uPVC End Caps <b>Finish:</b> Stainless Steel (Grate Only)	74mm x 27mm	DN50 (default) DN40	Up to 1500mm
65TRG25-1800	2 x 900mm Standard Grate 3mm wire / 5mm gap 1 x Grey uPVC Channel (approx 1900mm) 2 x Outlets 2 x uPVC End Caps <b>Finish:</b> Stainless Steel (Grate Only)	74mm x 27mm	DN50 (default) DN40	Up to 1800mm

## Modular Kits uPVC Channel + Fittings

316 MARINE GRADE  
STAINLESS STEELOPTIONAL FINISHES  
SEE PAGE 49

PRODUCT CODE	KIT CONTENTS	WIDTH x DEPTH	OUTLET SIZE	LENGTH
65TRG25-1900	1 x 900mm Standard Grate 3mm wire / 5mm gap 1 x 1000mm Standard Grate 1 x Grey uPVC Channel (approx 2000mm) 2 x Outlets 2 x uPVC End Caps <b>Finish:</b> Stainless Steel (Grate Only)	74mm x 27mm	DN50 (default) DN40	Up to 1900mm
65TRG25-2000	2 x 1000mm Standard Grate 3mm wire / 5mm gap 1 x Grey uPVC Channel (approx 2100mm) 2 x Outlets 2 x uPVC End Caps <b>Finish:</b> Stainless Steel (Grate Only)	74mm x 27mm	DN50 (default) DN40	Up to 2000mm
65TRG25-2200	1 x 1000mm Standard Grate 3mm wire / 5mm gap 1 x 1200mm Standard Grate 1 x Grey uPVC Channel (approx 2300mm) 3 x Outlets 2 x uPVC End Caps <b>Finish:</b> Stainless Steel (Grate Only)	74mm x 27mm	DN50 (default) DN40	Up to 2200mm
65TRG25-2400	2 x 1200mm Standard Grate 3mm wire / 5mm gap 1 x Grey uPVC Channel (approx 2500mm) 3 x Outlets 2 x uPVC End Caps <b>Finish:</b> Stainless Steel (Grate Only)	74mm x 27mm	DN50 (default) DN40	Up to 2400mm
65TRG25-2700	1 x 1500mm Standard Grate 3mm wire / 5mm gap 1 x 1200mm Standard Grate 1 x Grey uPVC Channel (approx 2800mm) 3 x Outlets 2 x uPVC End Caps <b>Finish:</b> Stainless Steel (Grate Only)	74mm x 27mm	DN50 (default) DN40	Up to 2700mm
65TRG25-3000	2 x 1500mm Standard Grate 3mm wire / 5mm gap 1 x Grey uPVC Channel (approx 3000mm) 3 x Outlets 2 x uPVC End Caps <b>Finish:</b> Stainless Steel (Grate Only)	74mm x 27mm	DN50 (default) DN40	Up to 3000mm

## LONGER LENGTHS AVAILABLE ON REQUEST



65TiG25-0900	1 x 900mm Tile Insert / 1.5mm thick 1 x Grey uPVC Channel (approx 1000mm) 1 x Outlet 2 x uPVC End Caps <b>Finish:</b> Stainless Steel (Grate Only)	74mm x 27mm Suits tiles up to 10mm thick	DN50 (default) DN40	Up to 900mm
65TiG25-1000	1 x 1000mm Tile Insert / 1.5mm thick 1 x Grey uPVC Channel (approx 1100mm) 1 x Outlet 2 x uPVC End Caps <b>Finish:</b> Stainless Steel (Grate Only)	74mm x 27mm Suits tiles up to 10mm thick	DN50 (default) DN40	Up to 1000mm
65TiG25-1200	1 x 1200mm Tile Insert / 1.5mm thick 1 x Grey uPVC Channel (approx 1300mm) 1 x Outlet 2 x uPVC End Caps <b>Finish:</b> Stainless Steel (Grate Only)	74mm x 27mm Suits tiles up to 10mm thick	DN50 (default) DN40	Up to 1200mm
65TiG25-1800	2 x 900mm Tile Insert / 1.5mm thick 1 x Grey uPVC Channel (approx 1900mm) 2 x Outlets 2 x uPVC End Caps <b>Finish:</b> Stainless Steel (Grate Only)	74mm x 27mm Suits tiles up to 10mm thick	DN50 (default) DN40	Up to 1800mm
65TiG25-1900	1 x 900mm Tile Insert / 1.5mm thick 1 x 1000mm Tile Insert / 1.5mm thick 1 x Grey uPVC Channel (approx 2000mm) 2 x Outlets 2 x uPVC End Caps <b>Finish:</b> Stainless Steel (Grate Only)	74mm x 27mm Suits tiles up to 10mm thick	DN50 (default) DN40	Up to 1900mm

## Modular Kits uPVC Channel + Fittings

316 MARINE GRADE  
STAINLESS STEELOPTIONAL FINISHES  
SEE PAGE 49

PRODUCT CODE	KIT CONTENTS	WIDTH x DEPTH	OUTLET SIZE	LENGTH
65TiG25-2000	2 x 1000mm Tile Insert / 1.5mm thick 1 x Grey uPVC Channel (approx 2100mm) 2 x Outlets 2 x uPVC End Caps <b>Finish:</b> Stainless Steel (Grate Only)	74mm x 27mm Suits tiles up to 10mm thick	DN50 (default) DN40	Up to 2000mm
65TiG25-2200	1 x 1000mm Tile Insert / 1.5mm thick 1 x 1200mm Tile Insert / 1.5mm thick 1 x Grey uPVC Channel (approx 2300mm) 3 x Outlets 2 x uPVC End Caps <b>Finish:</b> Stainless Steel (Grate Only)	74mm x 27mm Suits tiles up to 10mm thick	DN50 (default) DN40	Up to 2200mm
65TiG25-2400	2 x 1200mm Tile Insert / 1.5mm thick 1 x Grey uPVC Channel (approx 2500mm) 3 x Outlets 2 x uPVC End Caps <b>Finish:</b> Stainless Steel (Grate Only)	74mm x 27mm Suits tiles up to 10mm thick	DN50 (default) DN40	Up to 2400mm
65TiG25-2700	3 x 900mm Tile Insert / 1.5mm thick 1 x Grey uPVC Channel (approx 2800mm) 3 x Outlets 2 x uPVC End Caps <b>Finish:</b> Stainless Steel (Grate Only)	74mm x 27mm Suits tiles up to 10mm thick	DN50 (default) DN40	Up to 2700mm
65TiG25-3000	3 x 1000mm Tile Insert / 1.5mm thick 1 x Grey uPVC Channel (approx 3000mm) 3 x Outlets 2 x uPVC End Caps <b>Finish:</b> Stainless Steel (Grate Only)	74mm x 27mm Suits tiles up to 10mm thick	DN50 (default) DN40	Up to 3000mm

## LONGER LENGTHS AVAILABLE ON REQUEST



65MNDG25-0900	1 x 900mm Marc Newson Design Grate 1 x Grey uPVC Channel (approx 1000mm) 1 x Outlet 2 x uPVC End Caps <b>Finish:</b> Stainless Steel (Grate Only)	74mm x 27mm	DN50 (default) DN40	Up to 900mm
65MNDG25-1000	1 x 1000mm Marc Newson Design Grate 1 x Grey uPVC Channel (approx 1100mm) 1 x Outlet 2 x uPVC End Caps <b>Finish:</b> Stainless Steel (Grate Only)	74mm x 27mm	DN50 (default) DN40	Up to 1000mm
65MNDG25-1200	1 x 1200mm Marc Newson Design Grate 1 x Grey uPVC Channel (approx 1300mm) 1 x Outlet 2 x uPVC End Caps <b>Finish:</b> Stainless Steel (Grate Only)	74mm x 27mm	DN50 (default) DN40	Up to 1200mm
65MNDG25-1500	1 x 1500mm Marc Newson Design Grate 1 x Grey uPVC Channel (approx 1600mm) 2 x Outlets 2 x uPVC End Caps <b>Finish:</b> Stainless Steel (Grate Only)	74mm x 27mm	DN50 (default) DN40	Up to 1500mm
65MNDG25-1800	2 x 900mm Marc Newson Design Grate 1 x Grey uPVC Channel (approx 1900mm) 2 x Outlets 2 x uPVC End Caps <b>Finish:</b> Stainless Steel (Grate Only)	74mm x 27mm	DN50 (default) DN40	Up to 1800mm
65MNDG25-1900	1 x 900mm Marc Newson Design Grate 1 x 1000mm Marc Newson Design Grate 1 x Grey uPVC Channel (approx 2000mm) 2 x Outlets 2 x uPVC End Caps <b>Finish:</b> Stainless Steel (Grate Only)	74mm x 27mm	DN50 (default) DN40	Up to 1900mm
65MNDG25-2000	2 x 1000mm Marc Newson Design Grate 1 x Grey uPVC Channel (approx 2100mm) 2 x Outlets 2 x uPVC End Caps <b>Finish:</b> Stainless Steel (Grate Only)	74mm x 27mm	DN50 (default) DN40	Up to 2000mm

## Modular Kits uPVC Channel + Fittings

316 MARINE GRADE  
STAINLESS STEELOPTIONAL FINISHES  
SEE PAGE 49

PRODUCT CODE	KIT CONTENTS	WIDTH x DEPTH	OUTLET SIZE	LENGTH
65MNDG25-2200	1 x 1000mm Marc Newson Design Grate 1 x 1200mm Marc Newson Design Grate 1 x Grey uPVC Channel (approx 2300mm) 3 x Outlets 2 x uPVC End Caps <b>Finish:</b> Stainless Steel (Grate Only)	74mm x 27mm	DN50 (default) DN40	Up to 2200mm
65MNDG25-2400	2 x 1200mm Marc Newson Design Grate 1 x Grey uPVC Channel (approx 2500mm) 3 x Outlets 2 x uPVC End Caps <b>Finish:</b> Stainless Steel (Grate Only)	74mm x 27mm	DN50 (default) DN40	Up to 2400mm
65MNDG25-2700	1 x 1500mm Marc Newson Design Grate 1 x 1200mm Marc Newson Design Grate 1 x Grey uPVC Channel (approx 2800mm) 3 x Outlets 2 x uPVC End Caps <b>Finish:</b> Stainless Steel (Grate Only)	74mm x 27mm	DN50 (default) DN40	Up to 2700mm
65MNDG25-3000	2 x 1500mm Marc Newson Design Grate 1 x Grey uPVC Channel (approx 3000mm) 3 x Outlets 2 x uPVC End Caps <b>Finish:</b> Stainless Steel (Grate Only)	74mm x 27mm	DN50 (default) DN40	Up to 3000mm
<b>LONGER LENGTHS AVAILABLE ON REQUEST</b>				
	1 x 900mm Punched Slot Grate 1 x Grey uPVC Channel (approx 1000mm) 1 x Outlet 2 x uPVC End Caps 1 x Bracket for Punched Slot Grate <b>Finish:</b> Stainless Steel (Grate Only)	74mm x 27mm	DN50 (default) DN40	Up to 900mm
	1 x 1000mm Punched Slot Grate 1 x Grey uPVC Channel (approx 1100mm) 1 x Outlet 2 x uPVC End Caps 1 x Bracket for Punched Slot Grate <b>Finish:</b> Stainless Steel (Grate Only)	74mm x 27mm	DN50 (default) DN40	Up to 1000mm
	1 x 1200mm Punched Slot Grate 1 x Grey uPVC Channel (approx 1300mm) 1 x Outlet 2 x uPVC End Caps 1 x Bracket for Punched Slot Grate <b>Finish:</b> Stainless Steel (Grate Only)	74mm x 27mm	DN50 (default) DN40	Up to 1200mm
	1 x 1500mm Punched Slot Grate 1 x Grey uPVC Channel (approx 1600mm) 2 x Outlets 2 x uPVC End Caps 1 x Bracket for Punched Slot Grate <b>Finish:</b> Stainless Steel (Grate Only)	74mm x 27mm	DN50 (default) DN40	Up to 1500mm
	2 x 900mm Punched Slot Grate 1 x Grey uPVC Channel (approx 1900mm) 2 x Outlets 2 x uPVC End Caps 1 x Bracket for Punched Slot Grate <b>Finish:</b> Stainless Steel (Grate Only)	74mm x 27mm	DN50 (default) DN40	Up to 1800mm
	1 x 900mm Punched Slot Grate 1 x 1000mm Punched Slot Grate 1 x Grey uPVC Channel (approx 2000mm) 2 x Outlets 2 x uPVC End Caps 1 x Bracket for Punched Slot Grate <b>Finish:</b> Stainless Steel	74mm x 27mm	DN50 (default) DN40	Up to 1900mm
	2 x 1000mm Punched Slot Grate 1 x Grey uPVC Channel (approx 2100mm) 2 x Outlets 2 x uPVC End Caps 1 x Bracket for Punched Slot Grate <b>Finish:</b> Stainless Steel (Grate Only)	74mm x 27mm	DN50 (default) DN40	Up to 2000mm

## Modular Kits uPVC Channel + Fittings

316 MARINE GRADE  
STAINLESS STEELOPTIONAL FINISHES  
SEE PAGE 49

PRODUCT CODE	KIT CONTENTS	WIDTH x DEPTH	OUTLET SIZE	LENGTH
<b>65PSG25-2200</b>	1 x 1000mm Punched Slot Grate 1 x 1200mm Punched Slot Grate 1 x Grey uPVC Channel (approx 2300mm) 3 x Outlets 2 x uPVC End Caps 1 x Bracket for Punched Slot Grate <b>Finish:</b> Stainless Steel (Grate Only)	74mm x 27mm	DN50 (default) DN40	Up to 2200mm
<b>65PSG25-2400</b>	2 x 1200mm Punched Slot Grate 1 x Grey uPVC Channel (approx 2500mm) 3 x Outlets 2 x uPVC End Caps 1 x Bracket for Punched Slot Grate <b>Finish:</b> Stainless Steel (Grate Only)	74mm x 27mm	DN50 (default) DN40	Up to 2400mm
<b>65PSG25-2700</b>	3 x 900mm Punched Slot Grate 1 x Grey uPVC Channel (approx 2800mm) 3 x Outlets 2 x uPVC End Caps 1 x Bracket for Punched Slot Grate <b>Finish:</b> Stainless Steel (Grate Only)	74mm x 27mm	DN50 (default) DN40	Up to 2700mm
<b>65PSG25-3000</b>	2 x 1500mm Punched Slot Grate 1 x Grey uPVC Channel (approx 3000mm) 3 x Outlets 2 x uPVC End Caps 1 x Bracket for Punched Slot Grate <b>Finish:</b> Stainless Steel (Grate Only)	74mm x 27mm	DN50 (default) DN40	Up to 3000mm

## LONGER LENGTHS AVAILABLE ON REQUEST



<b>65ARG40-0900</b>	1 x 900mm Premium Architectural Grate 2mm wire / 2.5mm gap 1 x Grey uPVC Channel (approx 1000mm) 1 x Outlet 2 x uPVC End Caps <b>Finish:</b> Stainless Steel (Grate Only)	74mm x 42mm	DN50 (default) DN40	Up to 900mm
<b>65ARG40-1000</b>	1 x 1000mm Premium Architectural Grate 2mm wire / 2.5mm gap 1 x Grey uPVC Channel (approx 1100mm) 1 x Outlet 2 x uPVC End Caps <b>Finish:</b> Stainless Steel (Grate Only)	74mm x 42mm	DN50 (default) DN40	Up to 1000mm
<b>65ARG40-1200</b>	1 x 1200mm Premium Architectural Grate 2mm wire / 2.5mm gap 1 x Grey uPVC Channel (approx 1300mm) 1 x Outlet 2 x uPVC End Caps <b>Finish:</b> Stainless Steel (Grate Only)	74mm x 42mm	DN50 (default) DN40	Up to 1200mm
<b>65ARG40-1500</b>	1 x 1500mm Premium Architectural Grate 2mm wire / 2.5mm gap 1 x Grey uPVC Channel (approx 1600mm) 1 x Outlet 2 x uPVC End Caps <b>Finish:</b> Stainless Steel (Grate Only)	74mm x 42mm	DN50 (default) DN40	Up to 1500mm
<b>65ARG40-1800</b>	2 x 900mm Premium Architectural Grate 2mm wire / 2.5mm gap 1 x Grey uPVC Channel (approx 1900mm) 1 x Outlet 2 x uPVC End Caps <b>Finish:</b> Stainless Steel (Grate Only)	74mm x 42mm	DN50 (default) DN40	Up to 1800mm
<b>65ARG40-1900</b>	1 x 900mm Premium Architectural Grate 2mm wire / 2.5mm gap 1 x 1000mm Premium Grate 1 x Grey uPVC Channel (approx 2000mm) 1 x Outlet 2 x uPVC End Caps <b>Finish:</b> Stainless Steel (Grate Only)	74mm x 42mm	DN50 (default) DN40	Up to 1900mm

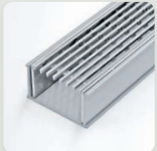


## Modular Kits uPVC Channel + Fittings

316 MARINE GRADE  
STAINLESS STEELOPTIONAL FINISHES  
SEE PAGE 49

PRODUCT CODE	KIT CONTENTS	WIDTH x DEPTH	OUTLET SIZE	LENGTH
65ARG40-2000	2 x 1000mm Premium Architectural Grate 2mm wire / 2.5mm gap 1 x Grey uPVC Channel (approx 2100mm) 1 x Outlet 2 x uPVC End Caps <b>Finish:</b> Stainless Steel (Grate Only)	74mm x 42mm	DN50 (default) DN40	Up to 2000mm
65ARG40-2200	1 x 1000mm Premium Architectural Grate 2mm wire / 2.5mm gap 1 x 1200mm Premium Architectural Grate 1 x Grey uPVC Channel (approx 2300mm) 2 x Outlets 2 x uPVC End Caps <b>Finish:</b> Stainless Steel (Grate Only)	74mm x 42mm	DN50 (default) DN40	Up to 2200mm
65ARG40-2400	2 x 1200mm Premium Architectural Grate 2mm wire / 2.5mm gap 1 x Grey uPVC Channel (approx 2500mm) 2 x Outlets 2 x uPVC End Caps <b>Finish:</b> Stainless Steel (Grate Only)	74mm x 42mm	DN50 (default) DN40	Up to 2400mm
65ARG40-2700	1 x 1500mm Premium Architectural Grate 2mm wire / 2.5mm gap 1 x 1200mm Premium Architectural Grate 1 x Grey uPVC Channel (approx 2800mm) 2 x Outlets 2 x uPVC End Caps <b>Finish:</b> Stainless Steel (Grate Only)	74mm x 42mm	DN50 (default) DN40	Up to 2700mm
65ARG40-3000	2 x 1500mm Premium Architectural Grate 2mm wire / 2.5mm gap 1 x Grey uPVC Channel (approx 3000mm) 2 x Outlets 2 x uPVC End Caps <b>Finish:</b> Stainless Steel (Grate Only)	74mm x 42mm	DN50 (default) DN40	Up to 3000mm

## LONGER LENGTHS AVAILABLE ON REQUEST



65TRG40-0900	1 x 900mm Standard Grate 3mm wire / 5mm gap 1 x Grey uPVC Channel (approx 1000mm) 1 x Outlet 2 x uPVC End Caps <b>Finish:</b> Stainless Steel (Grate Only)	74mm x 42mm	DN50 (default) DN40	Up to 900mm
65TRG40-1000	1 x 1000mm Standard Grate 3mm wire / 5mm gap 1 x Grey uPVC Channel (approx 1100mm) 1 x Outlet 2 x uPVC End Caps <b>Finish:</b> Stainless Steel (Grate Only)	74mm x 42mm	DN50 (default) DN40	Up to 1000mm
65TRG40-1200	1 x 1200mm Standard Grate 3mm wire / 5mm gap 1 x Grey uPVC Channel (approx 1300mm) 1 x Outlet 2 x uPVC End Caps <b>Finish:</b> Stainless Steel (Grate Only)	74mm x 42mm	DN50 (default) DN40	Up to 1200mm
65TRG40-1500	1 x 1500mm Standard Grate 3mm wire / 5mm gap 1 x Grey uPVC Channel (approx 1600mm) 1 x Outlet 2 x uPVC End Caps <b>Finish:</b> Stainless Steel (Grate Only)	74mm x 42mm	DN50 (default) DN40	Up to 1500mm
65TRG40-1800	2 x 900mm Standard Grate 3mm wire / 5mm gap 1 x Grey uPVC Channel (approx 1900mm) 1 x Outlet 2 x uPVC End Caps <b>Finish:</b> Stainless Steel (Grate Only)	74mm x 42mm	DN50 (default) DN40	Up to 1800mm

## Modular Kits uPVC Channel + Fittings

316 MARINE GRADE  
STAINLESS STEELOPTIONAL FINISHES  
SEE PAGE 49

PRODUCT CODE	KIT CONTENTS	WIDTH x DEPTH	OUTLET SIZE	LENGTH
65TRG40-1900	1 x 900mm Standard Grate 3mm wire / 5mm gap 1 x 1000mm Standard Grate 1 x Grey uPVC Channel (approx 2000mm) 1 x Outlet 2 x uPVC End Caps <b>Finish:</b> Stainless Steel (Grate Only)	74mm x 42mm	DN50 (default) DN40	Up to 1900mm
65TRG40-2000	2 x 1000mm Standard Grate 3mm wire / 5mm gap 1 x Grey uPVC Channel (approx 2100mm) 1 x Outlet 2 x uPVC End Caps <b>Finish:</b> Stainless Steel (Grate Only)	74mm x 42mm	DN50 (default) DN40	Up to 2000mm
65TRG40-2200	1 x 1000mm Standard Grate 3mm wire / 5mm gap 1 x 1200mm Standard Grate 1 x Grey uPVC Channel (approx 2300mm) 2 x Outlets 2 x uPVC End Caps <b>Finish:</b> Stainless Steel (Grate Only)	74mm x 42mm	DN50 (default) DN40	Up to 2200mm
65TRG40-2400	2 x 1200mm Standard Grate 3mm wire / 5mm gap 1 x Grey uPVC Channel (approx 2500mm) 2 x Outlets 2 x uPVC End Caps <b>Finish:</b> Stainless Steel (Grate Only)	74mm x 42mm	DN50 (default) DN40	Up to 2400mm
65TRG40-2700	1 x 1500mm Standard Grate 3mm wire / 5mm gap 1 x 1200mm Standard Grate 1 x Grey uPVC Channel (approx 2800mm) 2 x Outlets 2 x uPVC End Caps <b>Finish:</b> Stainless Steel (Grate Only)	74mm x 42mm	DN50 (default) DN40	Up to 2700mm
65TRG40-3000	2 x 1500mm Standard Grate 3mm wire / 5mm gap 1 x Grey uPVC Channel (approx 3000mm) 2 x Outlets 2 x uPVC End Caps <b>Finish:</b> Stainless Steel (Grate Only)	74mm x 42mm	DN50 (default) DN40	Up to 3000mm

## LONGER LENGTHS AVAILABLE ON REQUEST



65PSG40-0900	1 x 900mm Punched Slot Grate 1 x Grey uPVC Channel (approx 1000mm) 1 x Outlet 2 x uPVC End Caps 1 x Bracket for Punched Slot Grate <b>Finish:</b> Stainless Steel (Grate Only)	74mm x 42mm	DN50 (default) DN40	Up to 900mm
65PSG40-1000	1 x 1000mm Punched Slot Grate 1 x Grey uPVC Channel (approx 1100mm) 1 x Outlet 2 x uPVC End Caps 1 x Bracket for Punched Slot Grate <b>Finish:</b> Stainless Steel (Grate Only)	74mm x 42mm	DN50 (default) DN40	Up to 1000mm
65PSG40-1200	1 x 1200mm Punched Slot Grate 1 x Grey uPVC Channel (approx 1300mm) 1 x Outlet 2 x uPVC End Caps 1 x Bracket for Punched Slot Grate <b>Finish:</b> Stainless Steel (Grate Only)	74mm x 42mm	DN50 (default) DN40	Up to 1200mm
65PSG40-1500	1 x 1500mm Punched Slot Grate 1 x Grey uPVC Channel (approx 1600mm) 1 x Outlet 2 x uPVC End Caps 1 x Bracket for Punched Slot Grate <b>Finish:</b> Stainless Steel (Grate Only)	74mm x 42mm	DN50 (default) DN40	Up to 1500mm

## Modular Kits uPVC Channel + Fittings

316 MARINE GRADE  
STAINLESS STEELOPTIONAL FINISHES  
SEE PAGE 49

PRODUCT CODE	KIT CONTENTS	WIDTH x DEPTH	OUTLET SIZE	LENGTH
65PSG40-1800	2 x 900mm Punched Slot Grate 1 x Grey uPVC Channel (approx 1900mm) 1 x Outlet 2 x uPVC End Caps 1 x Bracket for Punched Slot Grate <b>Finish:</b> Stainless Steel (Grate Only)	74mm x 42mm	DN50 (default) DN40	Up to 1800mm
65PSG40-1900	1 x 900mm Punched Slot Grate 1 x 1000mm Punched Slot Grate 1 x Grey uPVC Channel (approx 2000mm) 1 x Outlet 2 x uPVC End Caps 1 x Bracket for Punched Slot Grate <b>Finish:</b> Stainless Steel (Grate Only)	74mm x 42mm	DN50 (default) DN40	Up to 1900mm
65PSG40-2000	2 x 1000mm Punched Slot Grate 1 x Grey uPVC Channel (approx 2100mm) 1 x Outlet 2 x uPVC End Caps 1 x Bracket for Punched Slot Grate <b>Finish:</b> Stainless Steel (Grate Only)	74mm x 42mm	DN50 (default) DN40	Up to 2000mm
65PSG40-2200	1 x 1000mm Punched Slot Grate 1 x 1200mm Punched Slot Grate 1 x Grey uPVC Channel (approx 2300mm) 2 x Outlets 2 x uPVC End Caps 1 x Bracket for Punched Slot Grate <b>Finish:</b> Stainless Steel (Grate Only)	74mm x 42mm	DN50 (default) DN40	Up to 2200mm
65PSG40-2400	2 x 1200mm Punched Slot Grate 1 x Grey uPVC Channel (approx 2500mm) 2 x Outlets 2 x uPVC End Caps 1 x Bracket for Punched Slot Grate <b>Finish:</b> Stainless Steel (Grate Only)	74mm x 42mm	DN50 (default) DN40	Up to 2400mm
65PSG40-2700	3 x 900mm Punched Slot Grate 1 x Grey uPVC Channel (approx 2800mm) 2 x Outlets 2 x uPVC End Caps 1 x Bracket for Punched Slot Grate <b>Finish:</b> Stainless Steel (Grate Only)	74mm x 42mm	DN50 (default) DN40	Up to 2700mm
65PSG40-3000	2 x 1500mm Punched Slot Grate 1 x Grey uPVC Channel (approx 3000mm) 2 x Outlets 2 x uPVC End Caps 1 x Bracket for Punched Slot Grate <b>Finish:</b> Stainless Steel (Grate Only)	74mm x 42mm	DN50 (default) DN40	Up to 3000mm

LONGER LENGTHS AVAILABLE ON REQUEST



# 38 Range

- 38mm Grate Width
- 42mm Channel Depth
- Stainless Steel or uPVC Drainage Channel

Made-to-Length Depth: 42mm

316 MARINE GRADE  
STAINLESS STEEL

OPTIONAL FINISHES  
SEE PAGE 49

PRODUCT CODE	DESCRIPTION	WIDTH x DEPTH	OUTLET SIZE	LENGTH
 <b>38ARI40MTL</b>	All stainless steel drainage unit made to length with specified outlet position. Premium Architectural Grate 2mm wire / 2.5mm gap <b>Finish:</b> Stainless Steel	46mm x 42mm	DN40	As Required
 <b>38PSi40MTL</b>	All stainless steel drainage unit made to length with specified outlet position. Punched Slot Grate <b>Finish:</b> Stainless Steel	46mm x 42mm	DN40	As Required

Modular Kits uPVC Channel + Fittings

316 MARINE GRADE  
STAINLESS STEEL

OPTIONAL FINISHES  
SEE PAGE 49

PRODUCT CODE	KIT CONTENTS	WIDTH x DEPTH	OUTLET SIZE	LENGTH
 <b>38ARG40-1200</b>	1 x 1200mm Premium Architectural Grate 2mm wire / 2.5mm gap 1 x Grey uPVC Channel (approx 1300mm) 2 x Outlets 2 x uPVC End Caps <b>Finish:</b> Stainless Steel (Grate Only)	46mm x 42mm	DN40 (default) DN50	Up to 1200mm
<b>38ARG40-1500</b>	1 x 1500mm Premium Architectural Grate 2mm wire / 2.5mm gap 1 x Grey uPVC Channel (approx 1600mm) 2 x Outlets 2 x uPVC End Caps <b>Finish:</b> Stainless Steel (Grate Only)	46mm x 42mm	DN40 (default) DN50	Up to 1500mm
<b>38ARG40-2400</b>	2 x 1200mm Premium Architectural Grate 2mm wire / 2.5mm gap 1 x Grey uPVC Channel (approx 2500mm) 3 x Outlets 2 x uPVC End Caps <b>Finish:</b> Stainless Steel (Grate Only)	46mm x 42mm	DN40 (default) DN50	Up to 2400mm
<b>38ARG40-2700</b>	1 x 1500mm Premium Architectural Grate 2mm wire / 2.5mm gap 1 x 1200mm Premium Architectural Grate 1 x Grey uPVC Channel (approx 2800mm) 3 x Outlets 2 x uPVC End Caps <b>Finish:</b> Stainless Steel (Grate Only)	46mm x 42mm	DN40 (default) DN50	Up to 2700mm
<b>38ARG40-3000</b>	2 x 1500mm Premium Architectural Grate 2mm wire / 2.5mm gap 1 x Grey uPVC Channel (approx 3000mm) 3 x Outlets 2 x uPVC End Caps <b>Finish:</b> Stainless Steel (Grate Only)	46mm x 42mm	DN40 (default) DN50	Up to 3000mm

LONGER LENGTHS AVAILABLE ON REQUEST

## Modular Kits uPVC Channel + Fittings

316 MARINE GRADE  
STAINLESS STEELOPTIONAL FINISHES  
SEE PAGE 49

PRODUCT CODE	KIT CONTENTS	WIDTH x DEPTH	OUTLET SIZE	LENGTH
<b>38PSG40-0900</b>	1 x 900mm Punched Slot Grate 1 x Grey uPVC Channel (approx 1000mm) 2 x Outlets 2 x uPVC End Caps 1 x Bracket for Punched Slot Grate <b>Finish:</b> Stainless Steel (Grate Only)	46mm x 42mm	DN40 (default) DN50	Up to 900mm
<b>38PSG40-1000</b>	1 x 1000mm Punched Slot Grate 1 x Grey uPVC Channel (approx 1100mm) 2 x Outlets 2 x uPVC End Caps 1 x Bracket for Punched Slot Grate <b>Finish:</b> Stainless Steel (Grate Only)	46mm x 42mm	DN40 (default) DN50	Up to 1000mm
<b>38PSG40-1200</b>	1 x 1200mm Punched Slot Grate 1 x Grey uPVC Channel (approx 1300mm) 2 x Outlets 2 x uPVC End Caps 1 x Bracket for Punched Slot Grate <b>Finish:</b> Stainless Steel (Grate Only)	46mm x 42mm	DN40 (default) DN50	Up to 1200mm
<b>38PSG40-1500</b>	1 x 1500mm Punched Slot Grate 1 x Grey uPVC Channel (approx 1600mm) 2 x Outlets 2 x uPVC End Caps 1 x Bracket for Punched Slot Grate <b>Finish:</b> Stainless Steel (Grate Only)	46mm x 42mm	DN40 (default) DN50	Up to 1500mm
<b>38PSG40-1800</b>	2 x 900mm Punched Slot Grate 1 x Grey uPVC Channel (approx 1900mm) 2 x Outlets 2 x uPVC End Caps 1 x Bracket for Punched Slot Grate <b>Finish:</b> Stainless Steel (Grate Only)	46mm x 42mm	DN40 (default) DN50	Up to 1800mm
<b>38PSG40-1900</b>	1 x 900mm Punched Slot Grate 1 x 1000mm Punched Slot Grate 1 x Grey uPVC Channel (approx 2000mm) 2 x Outlets 2 x uPVC End Caps 1 x Bracket for Punched Slot Grate <b>Finish:</b> Stainless Steel (Grate Only)	46mm x 42mm	DN40 (default) DN50	Up to 1900mm
<b>38PSG40-2000</b>	2 x 1000mm Punched Slot Grate 1 x Grey uPVC Channel (approx 2100mm) 2 x Outlets 2 x uPVC End Caps 1 x Bracket for Punched Slot Grate <b>Finish:</b> Stainless Steel (Grate Only)	46mm x 42mm	DN40 (default) DN50	Up to 2000mm
<b>38PSG40-2200</b>	1 x 1000mm Punched Slot Grate 1 x 1200mm Punched Slot Grate 1 x Grey uPVC Channel (approx 2300mm) 3 x Outlets 2 x uPVC End Caps 1 x Bracket for Punched Slot Grate <b>Finish:</b> Stainless Steel (Grate Only)	46mm x 42mm	DN40 (default) DN50	Up to 2200mm
<b>38PSG40-2400</b>	2 x 1200mm Punched Slot Grate 1 x Grey uPVC Channel (approx 2500mm) 3 x Outlets 2 x uPVC End Caps 1 x Bracket for Punched Slot Grate <b>Finish:</b> Stainless Steel (Grate Only)	46mm x 42mm	DN40 (default) DN50	Up to 2400mm
<b>38PSG40-2700</b>	3 x 900mm Punched Slot Grate 1 x Grey uPVC Channel (approx 2800mm) 3 x Outlets 2 x uPVC End Caps 1 x Bracket for Punched Slot Grate <b>Finish:</b> Stainless Steel (Grate Only)	46mm x 42mm	DN40 (default) DN50	Up to 2700mm
<b>38PSG40-3000</b>	2 x 1500mm Punched Slot Grate 1 x Grey uPVC Channel (approx 3000mm) 3 x Outlets 2 x uPVC End Caps 1 x Bracket for Punched Slot Grate <b>Finish:</b> Stainless Steel (Grate Only)	46mm x 42mm	DN40 (default) DN50	Up to 3000mm

LONGER LENGTHS AVAILABLE ON REQUEST

# Threshold Range

- ✓ Zero Threshold - seamless indoors to outdoors
- ✓ Sliding door tracks, bi-folds + hinged doors
- ✓ Access + Mobility Code compliant
- ✓ Available in 100 + 65 Ranges or Custom Made

## Sliding + Hinged Doors Doortrack with Sub-Sill Tray

**316 MARINE GRADE**  
STAINLESS STEEL

**OPTIONAL FINISHES**  
SEE PAGE 49

PRODUCT CODE	DESCRIPTION	WIDTH x DEPTH	LENGTH
 <b>100ARTDi</b>	Threshold Drain for door track with sub sill tray 100mm Premium Architectural Grate 2mm wire / 2.5mm gap <b>Finish:</b> Stainless Steel	Top Grate Width: 110mm Depth to suit sill section	As Required
 <b>100TRTDi</b>	Threshold Drain for door track with sub sill tray 100mm Standard Grate 3mm wire / 5mm gap <b>Finish:</b> Stainless Steel	Top Grate Width: 105mm Depth to suit sill section	As Required
 <b>100TiTDi</b>	Threshold Drain for door track with sub sill tray 100mm Tile Insert <b>Finish:</b> Stainless Steel	Top Grate Width: 110mm Depth to suit sill section	As Required
 <b>100MNDTDi</b>	Threshold Drain for door track with sub sill tray 100mm Marc Newson Design Grate <b>Finish:</b> Stainless Steel	Top Grate Width: 110mm Depth to suit sill section	As Required
 <b>100PSTDi</b>	Threshold Drain for door track with sub sill tray 100mm Punched Slot Grate <b>Finish:</b> Stainless Steel	Top Grate Width: 110mm Depth to suit sill section	As Required
 <b>65ARTDi</b>	Threshold Drain for door track with sub sill tray 65mm Premium Architectural Grate 2mm wire / 2.5mm gap <b>Finish:</b> Stainless Steel	Top Grate Width: 75mm Depth to suit sill section	As Required
 <b>65TRTDi</b>	Threshold Drain for door track with sub sill tray 65mm Standard Grate 3mm wire / 5mm gap <b>Finish:</b> Stainless Steel	Top Grate Width: 70mm Depth to suit sill section	As Required
 <b>65TiTDi</b>	Threshold Drain for door track with sub sill tray 65mm Tile Insert <b>Finish:</b> Stainless Steel	Top Grate Width: 75mm Depth to suit sill section	As Required
 <b>65MNDTDi</b>	Threshold Drain for door track with sub sill tray 65mm Marc Newson Design Grate <b>Finish:</b> Stainless Steel	Top Grate Width: 75mm Depth to suit sill section	As Required
 <b>65PSTDi</b>	Threshold Drain for door track with sub sill tray 65mm Punched Slot Grate <b>Finish:</b> Stainless Steel	Top Grate Width: 75mm Depth to suit sill section	As Required

## Sliding + Hinged Doors Doortrack Only Applications



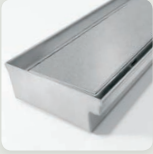


316 MARINE GRADE  
STAINLESS STEELOPTIONAL FINISHES  
SEE PAGE 49

PRODUCT CODE	DESCRIPTION	WIDTH x DEPTH	LENGTH
 100ARTDiS	Threshold Drain for door track only applications. 100mm Premium Architectural Grate 2mm wire / 2.5mm gap <b>Finish:</b> Stainless Steel	Top Grate Width: 110mm wide Depth to suit sill section	As Required
 100TRTDiS	Threshold Drain for door track only applications. 100mm Standard Grate 3mm wire / 5mm gap <b>Finish:</b> Stainless Steel	Top Grate Width: 105mm wide Depth to suit sill section	As Required
 100TITDiS	Threshold Drain for door track only applications. 100mm Tile Insert <b>Finish:</b> Stainless Steel	Top Grate Width: 110mm wide Depth to suit sill section	As Required
 100MNDTDiS	Threshold Drain for door track only applications. 100mm Marc Newson Design Grate <b>Finish:</b> Stainless Steel	Top Grate Width: 110mm wide Depth to suit sill section	As Required
 100PSTDiS	Threshold Drain for door track only applications. 100mm Punched Slot Grate <b>Finish:</b> Stainless Steel	Top Grate Width: 110mm wide Depth to suit sill section	As Required
 65ARTDiS	Threshold Drain for door track only applications. 65mm Premium Architectural Grate 2mm wire / 2.5mm gap <b>Finish:</b> Stainless Steel	Top Grate Width: 75mm wide + door track width Depth to suit sill section	As Required
 65TRTDiS	Threshold Drain for door track only applications. 65mm Standard Grate 3mm wire / 5mm gap <b>Finish:</b> Stainless Steel	Top Grate Width: 70mm wide + door track width Depth to suit sill section	As Required
 65TITDiS	Threshold Drain for door track only applications. 65mm Tile Insert <b>Finish:</b> Stainless Steel	Top Grate Width: 75mm wide + door track width Depth to suit sill section	As Required
 65MNDTDiS	Threshold Drain for door track only applications. 65mm Marc Newson Design Grate <b>Finish:</b> Stainless Steel	Top Grate Width: 75mm wide + door track width Depth to suit sill section	As Required
 65PSTDiS	Threshold Drain for door track only applications. 65mm Punched Slot Grate <b>Finish:</b> Stainless Steel	Top Grate Width: 75mm wide + door track width Depth to suit sill section	As Required

## Bi-Fold + Top-Hung Doors

316 MARINE GRADE  
STAINLESS STEEL




OPTIONAL FINISHES  
SEE PAGE 49

	PRODUCT CODE	DESCRIPTION	WIDTH x DEPTH	LENGTH
	<b>100ARTDiBF</b>	Threshold Drain bi-fold and top hung doors. 100mm Premium Architectural Grate 2mm wire / 2.5mm gap <b>Finish:</b> Stainless Steel	105mm wide Depth: 52mm - 100mm	As Required
	<b>100TRTDiBF</b>	Threshold Drain bi-fold and top hung doors. 100mm Standard Grate 3mm wire / 5mm gap <b>Finish:</b> Stainless Steel	105mm wide Depth: 52mm - 100mm	As Required
	<b>100TITDiBF</b>	Threshold Drain bi-fold and top hung doors. 100mm Tile Insert <b>Finish:</b> Stainless Steel	105mm wide Depth: 52mm - 100mm	As Required
	<b>100MNDTDiBF</b>	Threshold Drain bi-fold and top hung doors. 100mm Marc Newson Design Grate <b>Finish:</b> Stainless Steel	105mm wide Depth: 52mm - 100mm	As Required
	<b>100PSTDiBF</b>	Threshold Drain bi-fold and top hung doors. 100mm Punched Slot Grate <b>Finish:</b> Stainless Steel	105mm wide Depth: 52mm - 100mm	As Required

## Custom Threshold Fabrication

316 MARINE GRADE  
STAINLESS STEEL

OPTIONAL FINISHES  
SEE PAGE 49

	PRODUCT CODE	DESCRIPTION
	<b>TDi-MTS</b>	Customised Threshold Drain to suit doortrack with sub-sill tray. Selected Grate Style <b>Finish:</b> Stainless Steel
	<b>TDiS-MTS</b>	Customised Threshold Drain for door track only applications. Selected Grate Style <b>Finish:</b> Stainless Steel
	<b>TDiBF-MTS</b>	Customised Threshold Drain to suit bi-fold doors only. Selected Grate Style <b>Finish:</b> Stainless Steel





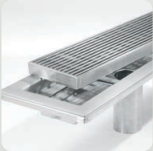
# Vinyl Clamp Range

- ✓ Clamps vinyl floor offering a seamless integration into vinyl floor surfaces.
- ✓ Ideally suited to residential and age/healthcare facilities.

## Vinyl Clamp Systems

316 MARINE GRADE  
STAINLESS STEEL

OPTIONAL FINISHES  
SEE PAGE 49

	PRODUCT CODE	DESCRIPTION	WIDTH x DEPTH	OUTLET SIZE	LENGTH
	<b>VC100-25</b>	Vinyl Clamp drainage system for use in vinyl floor environments. 100mm Standard Grate 3mm wire / 5mm gap <b>Finish:</b> Stainless Steel	170mm x 27mm	DN40 / DN50 DN65 / DN80 DN100	As Required
	<b>VC100-42</b>	Vinyl Clamp drainage system for use in vinyl floor environments. 100mm Standard Grate 3mm wire / 5mm gap <b>Finish:</b> Stainless Steel	170mm x 42mm	DN40 / DN50 DN65 / DN80 DN100	As Required
	<b>VC-MTS</b>	Vinyl Clamp drainage system for use in vinyl floor environments. Standard Grate 3mm wire / 5mm gap <b>Finish:</b> Stainless Steel	Custom	DN40 / DN50 DN65 / DN80 DN100	As Required

# Special Assembly + Slot Drain Range

- High performance outdoor drainage
- Provides flexibility in landscape + pool design

## 65mm Special Assembly uPVC Channel + Fittings



PRODUCT CODE	DESCRIPTION	WIDTH x DEPTH	LENGTH
<b>65G100</b>	100mm Drain Pipe Assembly with uPVC channel. 74mm o/a width	Channel: 74mm x 42mm	3000mm
<b>65G90</b>	90mm Drain Pipe Assembly with uPVC channel. 74mm o/a width	Channel: 74mm x 42mm	3000mm

## 65mm Grates Add to complete the drainage system

**316 MARINE GRADE**  
STAINLESS STEEL

**OPTIONAL FINISHES**  
SEE PAGE 49



PRODUCT CODE	DESCRIPTION	WIDTH x DEPTH	LENGTH
<b>65AR40-1000</b>	65mm Premium Architectural Grate 2mm wire / 2.5mm gap <b>Finish:</b> Stainless Steel	Grate Width: 65mm	1000mm
<b>65AR40-1500</b>	65mm Premium Architectural Grate 2mm wire / 2.5mm gap <b>Finish:</b> Stainless Steel	Grate Width: 65mm	1500mm



<b>65TR40-1000</b>	65mm Standard Grate 3mm wire / 5mm gap <b>Finish:</b> Stainless Steel	Grate Width: 65mm	1000mm
<b>65TR40-1500</b>	65mm Standard Grate 3mm wire / 5mm gap <b>Finish:</b> Stainless Steel	Grate Width: 65mm	1500mm



<b>65PS40-1000</b>	65mm Punched Slot Grate <b>Finish:</b> Stainless Steel	Grate Width: 65mm	1000mm
<b>65PS40-1500</b>	65mm Punched Slot Grate <b>Finish:</b> Stainless Steel	Grate Width: 65mm	1500mm

## 38mm Special Assembly uPVC Channel + Fittings





PRODUCT CODE	DESCRIPTION	WIDTH x DEPTH	LENGTH
<b>38G100</b>	100mm Drain Pipe Assembly with uPVC channel. 46mm o/a width	Channel: 46mm x 42mm	3000mm
<b>38G90</b>	90mm Drain Pipe Assembly with uPVC channel. 46mm o/a width	Channel: 46mm x 42mm	3000mm

## 38mm Grates Completes the drainage system

**316 MARINE GRADE**  
STAINLESS STEEL

**OPTIONAL FINISHES**  
SEE PAGE 49

	PRODUCT CODE	DESCRIPTION	WIDTH x DEPTH	LENGTH
	<b>38AR40-1200</b>	38mm Premium Architectural Grate 2mm wire / 2.5mm gap <b>Finish:</b> Stainless Steel	Grate Width: 38mm	1000mm
	<b>38AR40-1500</b>	38mm Premium Architectural Grate 2mm wire / 2.5mm gap <b>Finish:</b> Stainless Steel	Grate Width: 38mm	1500mm
	<b>38PS40-1000</b>	38mm Punched Slot Grate <b>Finish:</b> Stainless Steel	Grate Width: 38mm	1000mm
	<b>38PS40-1500</b>	38mm Punched Slot Grate <b>Finish:</b> Stainless Steel	Grate Width: 38mm	1500mm

## Slot Drain Original Slot Drain Components

**316 MARINE GRADE**  
STAINLESS STEEL

**OPTIONAL FINISHES**  
SEE PAGE 49

	PRODUCT CODE	DESCRIPTION	WIDTH x DEPTH	LENGTH
	<b>SD90</b>	uPVC Slot Drain 90mm Pipe with 25mm Insert <b>Includes Insert Only (No Holes)</b>	Pipe Diameter 90mm	3000mm
	<b>SD90H</b>	uPVC Slot Drain 90mm Pipe with 25mm Insert <b>With Holes</b>	Pipe Diameter 90mm	3000mm
	<b>SDiAR-1000</b>	30mm Premium Architectural Grate 2mm wire / 2.5mm gap Fits SD90 <b>Finish:</b> Stainless Steel	Grate Width: 30mm	1000mm
	<b>SDiAR-1500</b>	30mm Premium Architectural Grate 2mm wire / 2.5mm gap Fits SD90 <b>Finish:</b> Stainless Steel	Grate Width: 30mm	1500mm
	<b>SDJ</b>	Slot Drain Joiner kit	-	-

# Finishes + Accessories

- Electroplating, Powder Coating and Electropolishing Options
- Linear Drainage Accessories

## Electroplating

PRODUCT CODE	DESCRIPTION	FINISH
<b>EPL BRO</b>	Electroplating of Grate and Channel	Bronze
<b>EPL BRAS</b>	Electroplating of Grate and Channel	Brass
<b>EPL COP</b>	Electroplating of Grate and Channel	Copper
<b>EPL CUS</b>	Electroplating of Grate and Channel	Custom
<b>EPLSQ BRO</b>	Electroplating SQ square drain	Bronze
<b>EPLSQ BRAS</b>	Electroplating SQ square drain	Brass
<b>EPLSQ COP</b>	Electroplating SQ square drain	Copper
<b>EPLSQ CUS</b>	Electroplating SQ square drain	Custom

## Powder Coating

PRODUCT CODE	DESCRIPTION	FINISH
<b>PC1 BM</b>	Powder Coating for Grate or Tile Insert ONLY	Black Matte
<b>PC1 BS</b>	Powder Coating for Grate or Tile Insert ONLY	Black Satin
<b>PC1 Custom</b>	Powder Coating for Grate or Tile Insert ONLY	Custom
<b>PC2 BM</b>	Powder Coating for Grate or Tile Insert AND CHANNEL	Black Matte
<b>PC2 BS</b>	Powder Coating for Grate or Tile Insert AND CHANNEL	Black Satin
<b>PC2 Custom</b>	Powder Coating for Grate or Tile Insert AND CHANNEL	Custom
<b>PCSQ BM</b>	Powder Coating for SQ Square Drain	Black Matte
<b>PCSQ BS</b>	Powder Coating for SQ Square Drain	Black Satin
<b>PCSQ Custom</b>	Powder Coating for SQ Square Drain	Custom

## Electropolishing

PRODUCT CODE	DESCRIPTION
<b>Epolish</b>	Electropolishing for Grate or Tile Insert ONLY

## Accessories

PRODUCT CODE	DESCRIPTION
<b>SB76</b>	Commercial Strainer Basket Suits Standard 76mm Outlet
<b>SB89</b>	Commercial Strainer Basket Suits Standard 89mm Outlet (82mm diameter)
<b>SBDouble</b>	Bucket Trap. Fixed and removable Strainer Basket for commercial kitchens
<b>LK</b>	Lifting key for Grates or Tile Inserts
<b>ALCF-KIT-2inch</b>	Leak Control Flange for 50mm / 80mm / 100mm Pipe Includes 2 inch ring
<b>ALCF-KIT-4inch</b>	Leak Control Flange for 50mm / 80mm / 100mm Pipe Includes 4 inch ring

# Square Range

- ✓ Integrates a Standard Floor Waste with a Linear Drainage System
- ✓ Outlets Available: DN100 / DN80 / DN50 / DN40

## Square Floor Waste

316 MARINE GRADE  
STAINLESS STEEL

OPTIONAL FINISHES  
SEE PAGE 49



PRODUCT CODE	DESCRIPTION	DEPTH	DIMENSIONS	OUTLET SIZE
<b>SQ100AR</b>	Square Floor Waste with Premium Architectural Grate 2mm wire / 2.5mm gap 76mm Outlet <b>Finish:</b> Stainless Steel	22mm	103mm x 103mm	DN80
<b>SQ100AR-44</b>	Square Floor Waste with Premium Architectural Grate 2mm wire / 2.5mm gap 44mm Outlet <b>Finish:</b> Stainless Steel	22mm	103mm x 103mm	DN50
<b>SQ100AR-38</b>	Square Floor Waste with Premium Architectural Grate 2mm wire / 2.5mm gap 38mm Outlet <b>Finish:</b> Stainless Steel	22mm	103mm x 103mm	DN40



<b>SQ100TR</b>	Square Floor Waste with Standard Grate 3mm wire / 5mm gap 76mm Outlet <b>Finish:</b> Stainless Steel	22mm	103mm x 103mm	DN80
<b>SQ100TR-44</b>	Square Floor Waste with Standard Grate 3mm wire / 5mm gap 44mm Outlet <b>Finish:</b> Stainless Steel	22mm	103mm x 103mm	DN50
<b>SQ100TR-38</b>	Square Floor Waste with Standard Grate 3mm wire / 5mm gap 38mm Outlet <b>Finish:</b> Stainless Steel	22mm	103mm x 103mm	DN40



<b>SQ100Ti20</b>	Square Floor Waste with Tile Insert 89mm Outlet <b>Finish:</b> Stainless Steel	23mm	130mm x 130mm Suits tiles up to 10mm thick	DN100
<b>SQ100Ti30</b>	Square Floor Waste with Tile Insert 76mm Outlet <b>Finish:</b> Stainless Steel	30mm	130mm x 130mm Suits tiles up to 12mm thick	DN80
<b>SQ100Ti30-44</b>	Square Floor Waste with Tile Insert 44mm Outlet <b>Finish:</b> Stainless Steel	30mm	130mm x 130mm Suits tiles up to 12mm thick	DN50
<b>SQ100Ti30-38</b>	Square Floor Waste with Tile Insert 38mm Outlet <b>Finish:</b> Stainless Steel	30mm	130mm x 130mm Suits tiles up to 12mm thick	DN40

Square Floor Waste

316 MARINE GRADE  
STAINLESS STEEL

OPTIONAL FINISHES  
SEE PAGE 49



PRODUCT CODE	DESCRIPTION	DEPTH	DIMENSIONS	OUTLET SIZE
<b>SQ100MND</b>	Square Floor Waste with Marc Newson Design Grate 76mm Outlet <b>Finish:</b> Stainless Steel	22mm	103mm x 103mm	DN80
<b>SQ100MND-44</b>	Square Floor Waste with Marc Newson Design Grate 44mm Outlet <b>Finish:</b> Stainless Steel	22mm	103mm x 103mm	DN80
<b>SQ100MND-38</b>	Square Floor Waste with Marc Newson Design Grate 38mm Outlet <b>Finish:</b> Stainless Steel	22mm	103mm x 103mm	DN40



<b>SQ100PS</b>	Square Floor Waste with Punched Slot Grate 76mm Outlet <b>Finish:</b> Stainless Steel	22mm	103mm x 103mm	DN80
<b>SQ100PS-44</b>	Square Floor Waste with Punched Slot Grate 44mm Outlet <b>Finish:</b> Stainless Steel	22mm	103mm x 103mm	DN40
<b>SQ100PS-38</b>	Square Floor Waste with Punched Slot Grate 38mm Outlet <b>Finish:</b> Stainless Steel	22mm	103mm x 103mm	DN40

Square Floor Waste Commercial Range

304 GRADE  
STAINLESS STEEL

OPTIONAL FINISHES  
SEE PAGE 49



PRODUCT CODE	DESCRIPTION	DEPTH	DIMENSIONS	OUTLET SIZE
<b>SQ150CR</b>	Square Floor Waste 304 Stainless Steel 89mm Outlet <b>Finish:</b> Stainless Steel	32mm	150mm x 150mm	DN100
<b>SQ150CR-76</b>	Square Floor Waste 304 Stainless Steel 76mm Outlet <b>Finish:</b> Stainless Steel	32mm	150mm x 150mm	DN80



<b>SQ200CR</b>	Square Floor Waste 304 Stainless Steel 89mm Outlet <b>Finish:</b> Stainless Steel	32mm	200mm x 200mm	DN100
<b>SQ200CR-76</b>	Square Floor Waste 304 Stainless Steel 76mm Outlet <b>Finish:</b> Stainless Steel	32mm	200mm x 200mm	DN80

# Custom Fabrication

- For site specific needs + unusual situations
- Customise length, width, depth, outlets, shape, configurations and finishes

## Grates + Channel 316 Grade

**316 MARINE GRADE**  
STAINLESS STEEL

**OPTIONAL FINISHES**  
SEE PAGE 49

PRODUCT CODE	DESCRIPTION	GRATE WIDTH	OUTLET SIZE	LENGTH
<b>50Custom-316</b>	316 Stainless Steel Custom Made Wedgewire Grate and Channel. Load A	Grate Width: Up to 50mm	DN40 / DN50	Custom
<b>75Custom-316</b>	316 Stainless Steel Custom Made Wedgewire Grate and Channel. Load A	Grate Width: Up to 75mm	DN40 / DN50 DN65	Custom
<b>125Custom-316</b>	316 Stainless Steel Custom Made Wedgewire Grate and Channel. Load A	Grate Width: Up to 125mm	DN40 / DN50 DN65 / DN80 DN100	Custom
<b>150Custom-316</b>	316 Stainless Steel Custom Made Wedgewire Grate and Channel. Load A	Grate Width: Up to 150mm	DN40 / DN50 DN65 / DN80 DN100	Custom
<b>175Custom-316</b>	316 Stainless Steel Custom Made Wedgewire Grate and Channel. Load A	Grate Width: Up to 175mm	DN40 / DN50 DN65 / DN80 DN100	Custom
<b>200Custom-316</b>	316 Stainless Steel Custom Made Wedgewire Grate and Channel. Load A	Grate Width: Up to 200mm	DN40 / DN50 DN65 / DN80 DN100	Custom
<b>225Custom-316</b>	316 Stainless Steel Custom Made Wedgewire Grate and Channel. Load A	Grate Width: Up to 225mm	DN40 / DN50 DN65 / DN80 DN100	Custom
<b>250Custom-316</b>	316 Stainless Steel Custom Made Wedgewire Grate and Channel. Load A	Grate Width: Up to 250mm	DN40 / DN50 DN65 / DN80 DN100	Custom
<b>275Custom-316</b>	316 Stainless Steel Custom Made Wedgewire Grate and Channel. Load A	Grate Width: Up to 275mm	DN40 / DN50 DN65 / DN80 DN100	Custom
<b>300Custom-316</b>	316 Stainless Steel Custom Made Wedgewire Grate and Channel. Load A	Grate Width: Up to 300mm	DN40 / DN50 DN65 / DN80 DN100	Custom

**LOAD CLASS B, C + D AVAILABLE**

## Grates + Channel 304 Grade

**304 GRADE**  
STAINLESS STEEL

**OPTIONAL FINISHES**  
SEE PAGE 49

PRODUCT CODE	DESCRIPTION	GRATE WIDTH	OUTLET SIZE	LENGTH
<b>125Custom-304</b>	304 Stainless Steel Custom Made Wedgewire Grate and Channel. Load A	Grate Width: Up to 125mm	DN40 / DN50 DN65 / DN80 DN100	Custom
<b>150Custom-304</b>	304 Stainless Steel Custom Made Wedgewire Grate and Channel. Load A	Grate Width: Up to 150mm	DN40 / DN50 DN65 / DN80 DN100	Custom
<b>175Custom-304</b>	304 Stainless Steel Custom Made Wedgewire Grate and Channel. Load A	Grate Width: Up to 175mm	DN40 / DN50 DN65 / DN80 DN100	Custom
<b>200Custom-304</b>	304 Stainless Steel Custom Made Wedgewire Grate and Channel. Load A	Grate Width: Up to 200mm	DN40 / DN50 DN65 / DN80 DN100	Custom
<b>225Custom-304</b>	304 Stainless Steel Custom Made Wedgewire Grate and Channel. Load A	Grate Width: Up to 225mm	DN40 / DN50 DN65 / DN80 DN100	Custom



**Grates + Channel** 304 Grade

**304 GRADE**  
STAINLESS STEEL

**OPTIONAL FINISHES**  
SEE PAGE 49

PRODUCT CODE	DESCRIPTION	GRATE WIDTH	OUTLET SIZE	LENGTH
<b>250Custom-304</b>	304 Stainless Steel Custom Made Wedgewire Grate and Channel. Load A	Grate Width: Up to 250mm	DN40 / DN50 DN65 / DN80 DN100	Custom
<b>275Custom-304</b>	304 Stainless Steel Custom Made Wedgewire Grate and Channel. Load A	Grate Width: Up to 275mm	DN40 / DN50 DN65 / DN80 DN100	Custom
<b>300Custom-304</b>	304 Stainless Steel Custom Made Wedgewire Grate and Channel. Load A	Grate Width: Up to 300mm	DN40 / DN50 DN65 / DN80 DN100	Custom

**LOAD CLASS B, C + D AVAILABLE**

**Custom Fabrication** Custom Components

PRODUCT CODE	DESCRIPTION
<b>GF-MTS</b>	Stainless Steel Wedgewire Grate + Frame Custom Fabricated to Requirements
<b>Grate-MTS</b>	Stainless Steel Grate Only Custom Fabricated to Requirements
<b>LD1</b>	Lockdowns for Standard Grate (TR) 5mm gap
<b>LD2</b>	Lockdowns for Premium Architectural Grate (AR) 2.5mm gap
<b>TDi-MTS</b>	Customised Threshold Drain to suit doortrack with sub-sill tray. Selected Grate Style <b>Finish:</b> Stainless Steel
<b>TDiS-MTS</b>	Customised Threshold Drain to suit doortrack only. Selected Grate Style <b>Finish:</b> Stainless Steel
<b>TDiBF-MTS</b>	Customised Threshold Drain to suit bi-fold doors only. Selected Grate Style <b>Finish:</b> Stainless Steel
<b>Tii-MTS</b>	Custom Fabricated Tile Insert Drain
<b>Ti-MTS</b>	Custom Fabricated Tile Insert ONLY
<b>SQ-MTS</b>	Custom Fabricated Square Floor Waste
<b>VC-MTS</b>	Custom Fabricated Vinyl Floor Drain

**Additional Items** Components to complete the drain

PRODUCT CODE	DESCRIPTION
<b>Weld Ends</b>	One pair of welded ends
<b>Weld Outlet</b>	One outlet welded
<b>Weld Mitre</b>	One mitre angle welded
<b>T-Junction</b>	One T-Junction welded
<b>Grate Grip</b>	Reduce slip nodes on grate

# Hydraulic Guide + Product Care

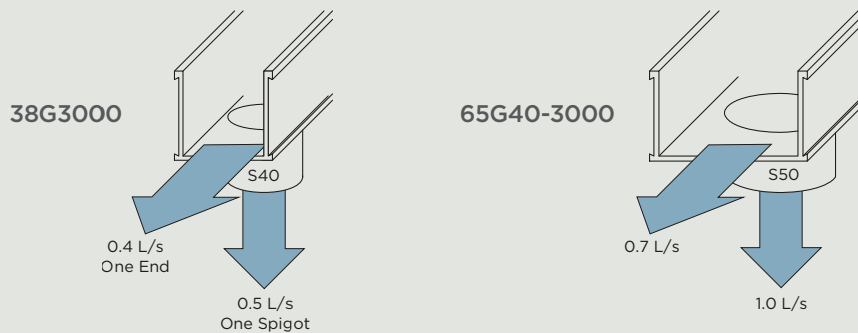
Refer to AS3500 for required outlet + pipe sizing appropriate to your application.

## Hydraulic Table For critical performance, always consult a hydraulic engineer.

CHANNEL	LATERAL FLOW RATE	DN40 SPIGOT	DN50 SPIGOT	DN80 SPIGOT	DN100 SPIGOT
38mm x 40mm	0.4 L/s	0.5 L/s	-	-	-
65mm x 40mm	0.7 L/s	0.5 L/s	1.0 L/s	-	-
65mm x 25mm	0.4 L/s	0.5 L/s	0.5 L/s	-	-
100mm x 20mm	0.4 L/s	0.5 L/s	0.5 L/s	0.5 L/s	0.5 L/s
100mm x 30mm	0.6 L/s	0.5 L/s	0.8 L/s	1.0 L/s	1.0 L/s
100mm x 40mm	0.9 L/s	0.5 L/s	1.0 L/s	1.0 L/s	1.1 L/s

Lateral flow rate is the flow rate along the channel towards the outlet or open end.  
All flow rates specified for spigots are vertical flow rates.

### Examples



## DN Pipe Sizes Pipe and outlet suitability

DN Pipe Size	DN40	DN50	DN65	DN80	DN100
Suitable Outlet Size	32mm / 38mm	44mm / 51mm	63.5mm	76mm	89mm

## Product Care With regular care, Stormtech Grates will stay in prime condition

### Stormtech stainless steel requires minimal attention and will not tarnish or corrode under normal circumstances.

Exposure to certain chemical or environmental conditions may, over time, promote surface oxidation. Please be aware this is not a defect in the stainless steel but a reaction on the surface of the finish to the chemical environment, which can be removed with a stainless steel polish.

### Environmental Conditions

Individual sites and situations vary dramatically. Areas close to salt water, particularly breaking surf are severe corrosion environments. Particular care is required to maintain the stainless steel.

# Grate Styles + Finishes

## Grate Styles



**AR**

Premium Architectural Grate  
2mm wire / 2.5mm gap



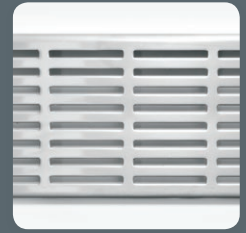
**TR**

Standard Grate  
3mm wire / 5mm gap



**Ti**

Tile Insert



**PS**

Punched Slot Grate



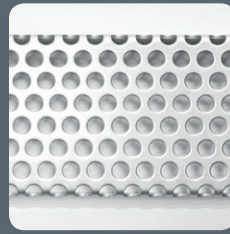
**MND**

Mark Newson Design Grate



**FT**

Flat Top Grate



**PH**

Punched Hole Grate

## Grate Finishes

Available for all grate styles + stainless steel channels

**CUSTOM FINISHES  
AVAILABLE ON REQUEST**



**Stainless Steel**

Satin Finish



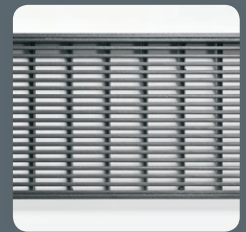
**Polished Stainless Steel**

Electropolished Finish



**Satin Black**

Powder Coat Finish



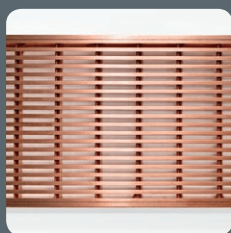
**Matte Black**

Powder Coat Finish



**Bronze**

Electroplated Finish



**Copper**

Electroplated Finish



**Brass**

Electroplated Finish



Visit [stormtech.com.au](http://stormtech.com.au) for detailed assembly and installation information.

#### Technical Drawings

We provide product CAD files for download from our website.

#### Distributors + Stockists

To find a distributor near you, please visit our website or call our office.



**Stormtech™**

Stormtech Pty Ltd | 22 Norfolk Avenue, South Nowra, NSW, 2541 Australia

Telephone 1300 653 403 Email [info@stormtech.com.au](mailto:info@stormtech.com.au) Web [www.stormtech.com.au](http://www.stormtech.com.au)