

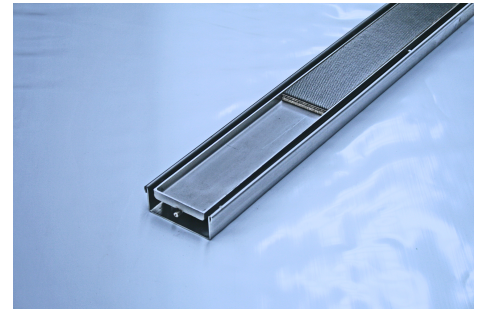
65TRTi25 Drainage System

Product Description

The 65TRTi25 is a standard tile insert drain suitable for tiles up to 8mm thick.

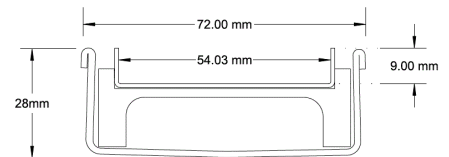
The 65TRTi25 is a modular drainage kit with stainless steel tray insert, stainless steel drainage channel and fittings. The length of the insert is non adjustable but the kit is still assembled at the time of installation.

All components are manufactured from 316 marine grade stainless steel.



Applications

- Balcony
- Bathroom
- Courtyard / Patio
- Paved Area
- Pool Area
- Shower
- Special needs
- Suspended slab
- Wet Area Drainage



Specifications

	Width	Depth	Length	Outlet size
Assembled unit	72mm	28mm	900mm 1000mm 1200mm	DN50

