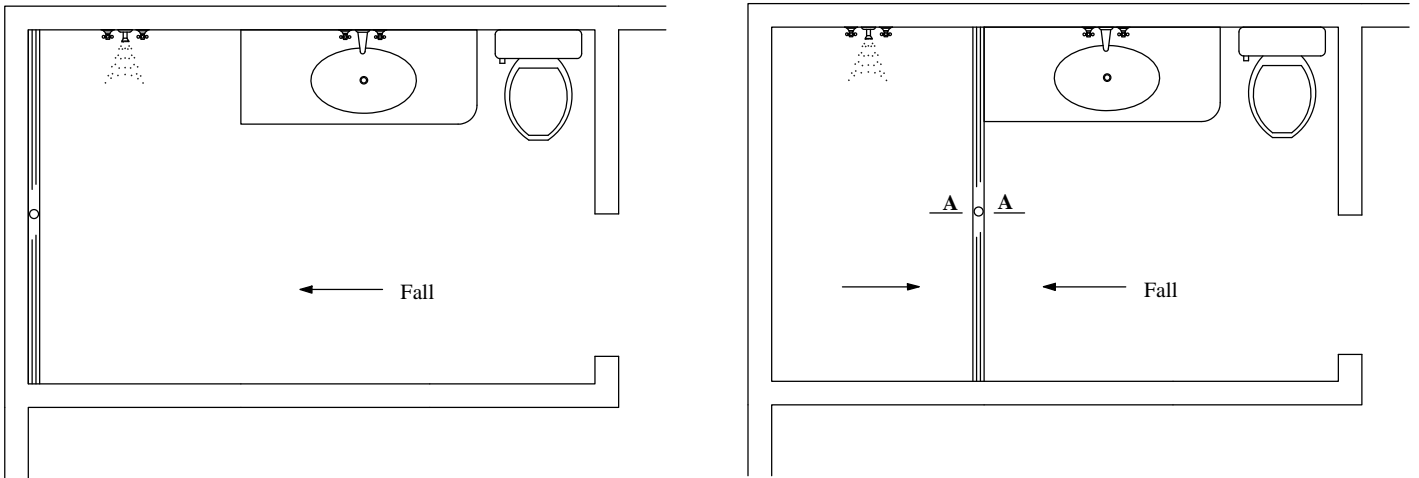
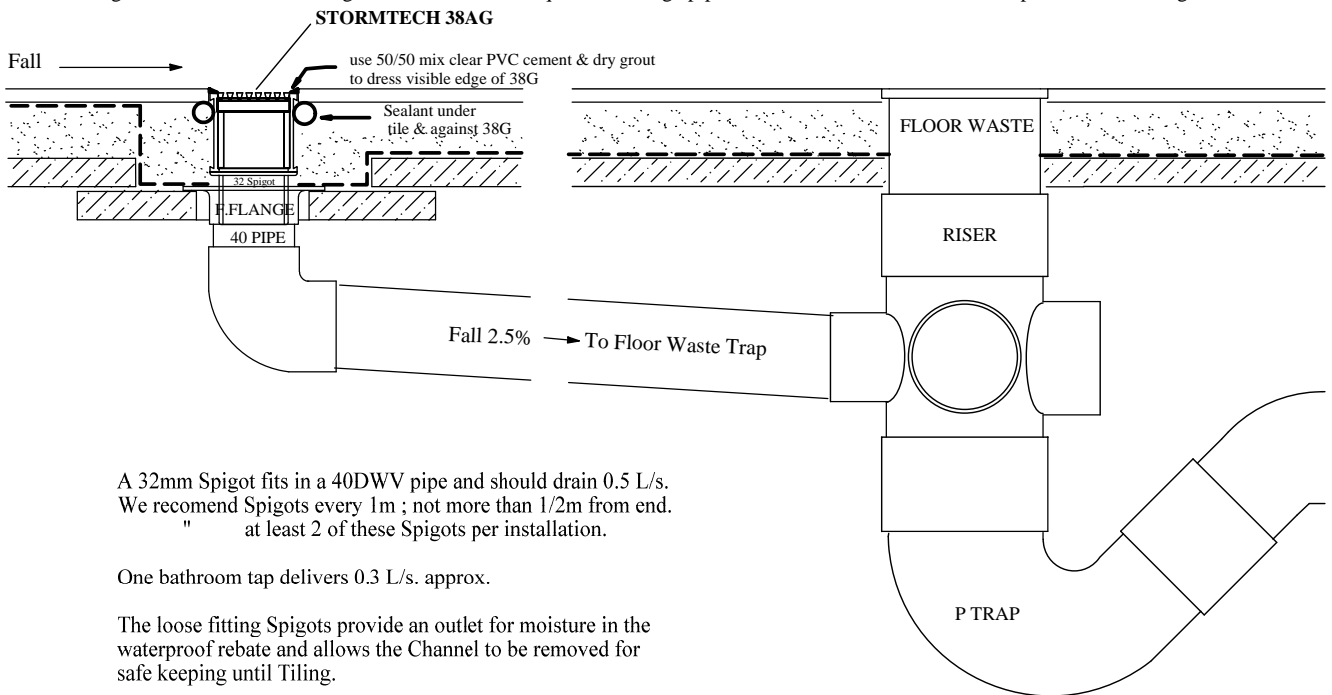


BATHROOM 38AG

www.stormtech.com.au



This design conforms with Plumbing Code AS3500 that requires discharge pipes be connected to a floor waste trap with removable grate.



A 32mm Spigot fits in a 40DWV pipe and should drain 0.5 L/s.
We recommend Spigots every 1m ; not more than 1/2m from end.
" at least 2 of these Spigots per installation.

One bathroom tap delivers 0.3 L/s. approx.

The loose fitting Spigots provide an outlet for moisture in the waterproof rebate and allows the Channel to be removed for safe keeping until Tiling.

Installations in suspended floors, should be in a waterproof rebate.



(Patent 733361)