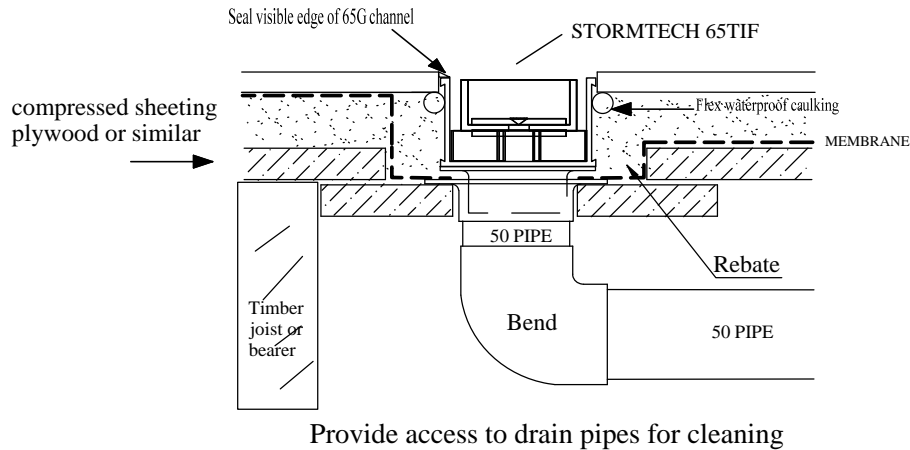
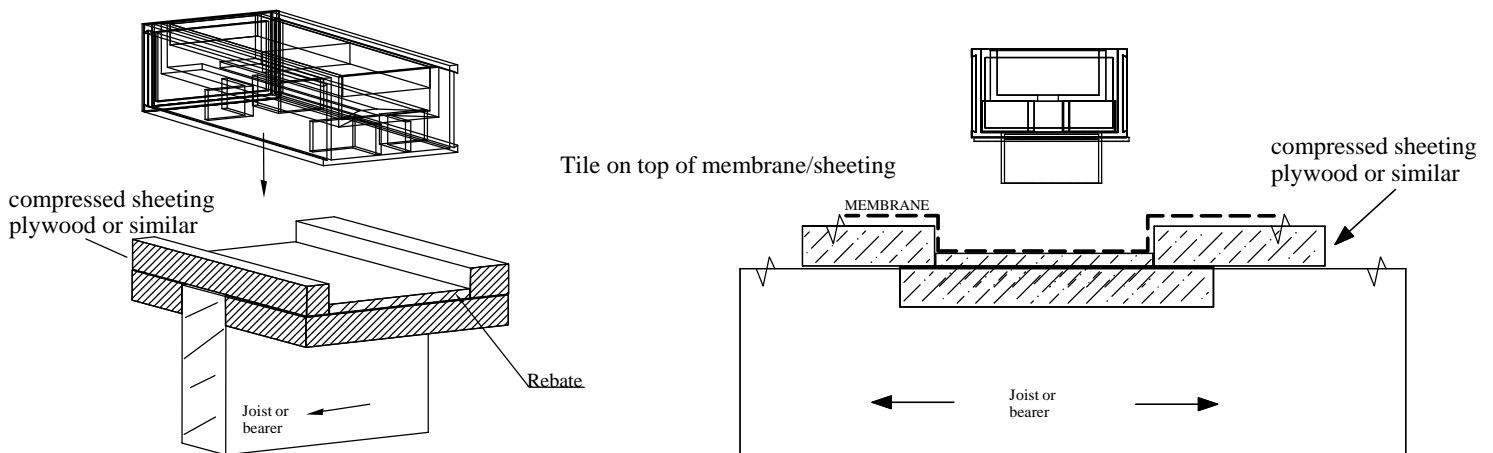


65TIF TIMBER FLOOR/DECK Standard installation

When 65TIF is running parallel to joist/bearer



When 65TIF is running perpendicular to joist/bearer



NOTE if waterproofing is required the rebate must be waterproofed before laying the 65TIF system.

An F65 spigot fits in a 50 DWV pipe and should drain 1.0 L/s..... We recommend these Spigots every 1m.. not more than 1.0m from end.
The loose fitting Spigots provide an outlet for moisture in the waterproof rebate and allows the Channel to be removed for safe keeping until tiling.