

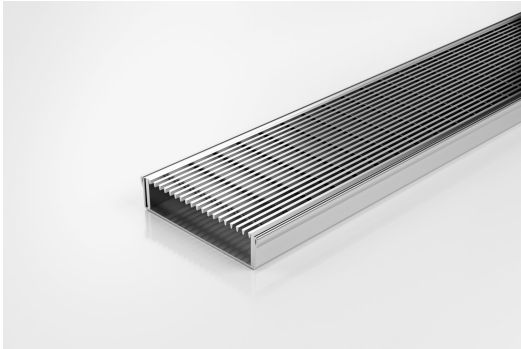


ARCHITECTURAL
GRATES + DRAINS



100ARi20

Linear Drain



The 100ARi20 is a modular drainage system with a stainless steel grate and stainless steel channel.

The 100AR is our premium style grate featuring a 2mm wire/2.5mm gap.

Manufactured from 316 marine grade steel.

Lengths over 3000mm available on request.

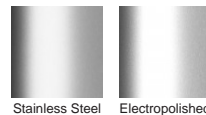
Code 100ARi20
Range 100
Grate Style AR
Category Modular Kits
Channel Material Stainless Steel
Steel Grade 316

Grates longer than 1500mm supplied in sections. Tile Inserts longer than 1200mm supplied in sections. Channels over 3000mm supplied in sections with joiner. +/-2mm tolerance on dimensions.

SPECIFICATIONS + DIMENSIONS

Channel Width	106mm
Channel Depth	23mm
Length(s)	900mm 1000mm 1200mm 1500mm 1800mm 1900mm 2000mm
Outlet Size	DN50, DN80, DN100

STORMTECH COLOUR FINISHES



Electroplate finishes subject to natural variation with time and local environment. Factors such as pools/surf beaches may require electropolishing. Contact us for suitability.

PRODUCT APPLICATIONS

- | | |
|----------------------------|----------------------------|
| Bathroom Drainage | Shower Drainage |
| Balcony Drainage | Multi-Residential Drainage |
| Commercial Drainage | Special Needs Drainage |
| Courtyard / Patio Drainage | Threshold Drainage |
| Pool and Spa Area Drainage | Suspended Slab Drainage |
| Paved Area Drainage | Wet Area Drainage |

Copyright © Stormtech Pty Ltd. Patent 733361. Drawings not to scale, please use dimensions shown.
Downloaded 25/04/2024 (please check for updates)



Visit stormtech.com.au
for tools + inspiration.

Phone **1300 653 403**

Email info@stormtech.com.au