

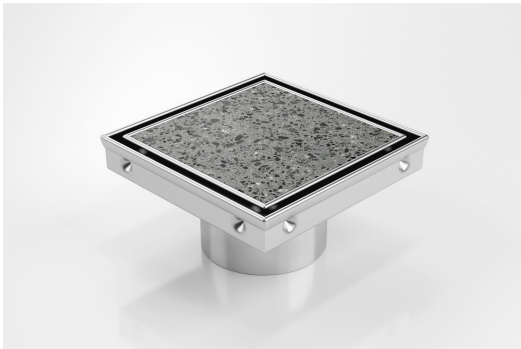


ARCHITECTURAL
GRATES + DRAINS



SQP100Ti20-80

Tile Insert Drain



Square Floor waste with Tile Insert

The SQP100Ti is a premium floor waste drain.

The SQ Range of floor waste units allow the integration of a standard floor waste with Stormtech linear drainage.

Tile Insert Floor waste measures 130mm x 130mm.

It is suitable for tiles up to 12mm thick.

Code SQP100Ti20-80

Range Square

Grate Style Ti

Category Fixed-Length Units

Channel Material Stainless Steel

Steel Grade 316

SPECIFICATIONS + DIMENSIONS

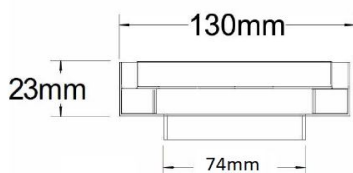
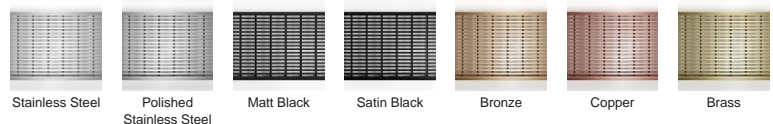
Channel Width 130mm

Channel Depth 23mm

Length(s) 130mm

Outlet Size DN80

STORMTECH COLOUR FINISHES



PRODUCT APPLICATIONS

Bathroom Drainage
Hospitality Drainage
Shower Drainage
Multi-Residential Drainage

Copyright © Stormtech Pty Ltd. Patent 733361. Drawings not to scale, please use dimensions shown.



Visit stormtech.com.au
for tools + inspiration.

Phone **1300 653 403**

Email info@stormtech.com.au