

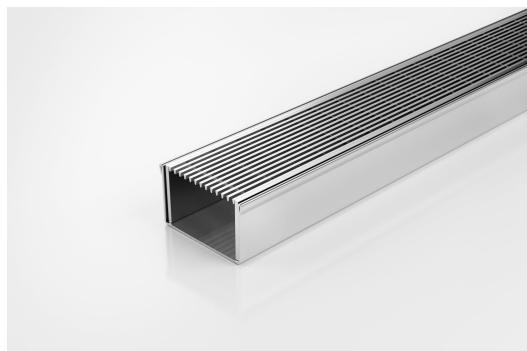


ARCHITECTURAL
GRATES + DRAINS



65ARi40

Linear Drain



Code 65ARi40

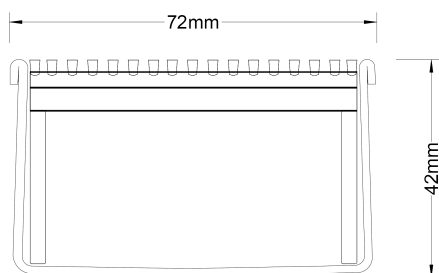
Range 65

Grate Style AR

Category Modular Kits

Channel Material Stainless Steel

Steel Grade 316



Grates longer than 1500mm supplied in sections. Tile Inserts longer than 1200mm supplied in sections. Channels over 3000mm supplied in sections with joiner. +/-2mm tolerance on dimensions.

The 65ARi40 is the original premium architectural grate featuring a 2mm wire/2.5mm gap.

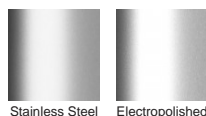
The 65ARi40 is a modular drainage kit with stainless steel grate(s), stainless steel drainage channel and fittings. It is size adjustable and will be assembled at the time of installation. All components are manufactured from 316 marine grade stainless steel. Lengths over 3000mm available on request. Please be aware that depending on the installation environment, for a pool installation or close to a surf beach, you may need to have your stainless steel grates electropolished.

Stormtech Modular Kits are supplied with grate and oversized channel to be cut down on site. One piece channel comes with pre punched spigot with outlet extender (kits up to 2000mm long). Oversized channel enables choice of outlet positions: centre, end or wherever preferred. Kits over 2000mm long and kits requiring multiple outlets are supplied with outlet on...

SPECIFICATIONS + DIMENSIONS

Channel Width	72mm			
Channel Depth	42mm			
Length(s)	900mm	1000mm	1200mm	1500mm
	1800mm	1900mm	2000mm	
Outlet Size	DN50			

STORMTECH COLOUR FINISHES



Electroplate finishes subject to natural variation with time and local environment. Factors such as pools/surf beaches may require electropolishing. Contact us for suitability.

PRODUCT APPLICATIONS

Bathroom Drainage
Aged / Health Care Drainage
Balcony Drainage
Commercial Drainage
Courtyard / Patio Drainage
Pool and Spa Area Drainage

Hospitality Drainage
Paved Area Drainage
Shower Drainage
Multi-Residential Drainage
Special Needs Drainage
Threshold Drainage



Copyright © Stormtech Pty Ltd. Patent 733361. Drawings not to scale, please use dimensions shown.
Downloaded 27/08/2025 (please check for updates)

Visit **stormtech.com.au**
for tools + inspiration.

Phone **1300 653 403**

Email **info@stormtech.com.au**