

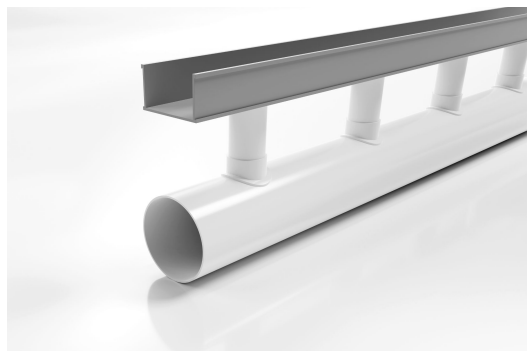


ARCHITECTURAL  
GRATES + DRAINS



# 65G100

## Linear Drain

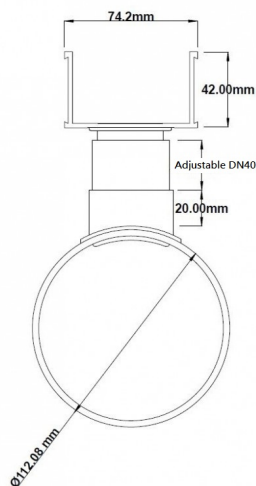


**Code** 65G100

**Range** Special Assembly

**Category** Modular Kits

**Channel Material** uPVC



Grates longer than 1500mm supplied in sections. Tile Inserts longer than 1200mm supplied in sections. Channels over 3000mm supplied in sections with joiner. +/-2mm tolerance on dimensions.

Developed for high capacity drainage needs, providing flexibility in landscape and pool design.

100mm Drainpipe with 65G UPVC Channel.

A 65mm wide UPVC channel is connected via downpipes at 200mm intervals to sockets in a 100mm drain below.

This allows the channel to be installed level while the drainpipe is given sufficient fall to be self-cleaning.

The Special Assembly is then completed with a stainless steel grate from the AR, TR or PS series.

Please be aware that depending on the installation environment, for a pool installation or close to a surf beach, you may need to have your stainless steel grates electropolished.

This unique drainage system was recognised for its innovation by a DesignMark at the Australian International Design Awards.

**Please note stainless steel grates to complement this system are separate items**

### SPECIFICATIONS + DIMENSIONS

|               |        |
|---------------|--------|
| Channel Width | 74mm   |
| Channel Depth | 42mm   |
| Length(s)     | 3000mm |
| Outlet Size   | N/A    |

### PRODUCT APPLICATIONS

Balcony Drainage  
Commercial Drainage  
Courtyard / Patio Drainage  
Driveway Drainage  
Pool and Spa Area Drainage  
Paved Area Drainage

Special Needs Drainage  
Suspended Slab Drainage

Copyright © Stormtech Pty Ltd. Patent 733361. Drawings not to scale, please use dimensions shown.  
Downloaded 04/09/2025 (please check for updates)



Visit **stormtech.com.au**  
for tools + inspiration.

Phone **1300 653 403**

Email **info@stormtech.com.au**