

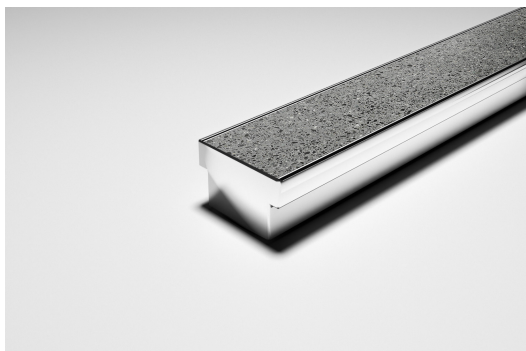


ARCHITECTURAL
GRATES + DRAINS



100Tii50MTL

Linear Drain



Code 100Tii50MTL

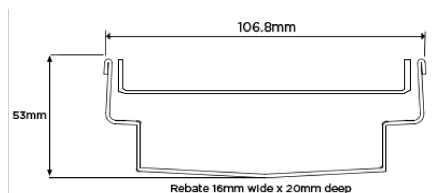
Range 100

Grate Style Ti

Category Made-to-Length

Channel Material Stainless Steel

Steel Grade 316



Grates longer than 1500mm supplied in sections. Tile Inserts longer than 1200mm supplied in sections. Channels over 3000mm supplied in sections with joiner. +/-2mm tolerance on dimensions.

The 100Tii50MTL is a tile insert linear drainage system providing a convenient solution for level entry and minimum stepdown requirement of 50mm at hinged door thresholds.

With a channel manufactured from sustainably sourced 316 marine grade stainless steel for durability, hygiene and luxurious visual appeal. This drainage is made to specified length with specified outlet position, featuring a sleek tile insert for seamless integration with tiled floors. Suits tiles up to 10mm thick.

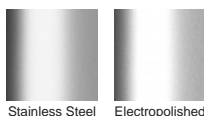
Please be aware that for a pool installation or installation environment close to a surf beach, you may need to have your stainless steel insert & channel electropolished.

Refer to AS3500 for outlet pipe sizes specific to your installation

SPECIFICATIONS + DIMENSIONS

Channel Width	107mm
Channel Depth	53mm
Length(s)	As Required
Outlet Size	DN40, DN50, DN65, DN80

STORMTECH COLOUR FINISHES



Electroplate finishes subject to natural variation with time and local environment. Factors such as pools/surf beaches may require electropolishing. Contact us for suitability.

PRODUCT APPLICATIONS

Bathroom Drainage
Aged / Health Care Drainage
Balcony Drainage
Courtyard / Patio Drainage
Paved Area Drainage
Shower Drainage

Special Needs Drainage
Threshold Drainage



Copyright © Stormtech Pty Ltd. Patent 733361. Drawings not to scale, please use dimensions shown.
Downloaded 06/09/2025 (please check for updates)

Visit **stormtech.com.au**
for tools + inspiration.

Phone **1300 653 403**

Email **info@stormtech.com.au**