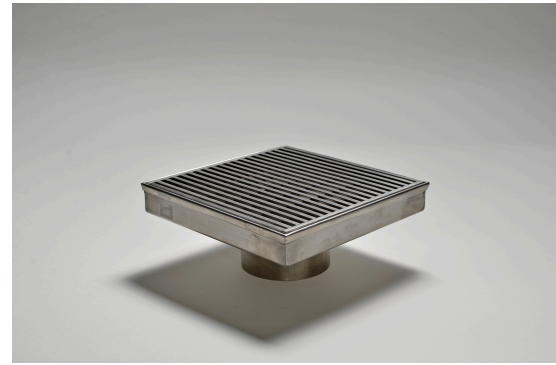


SQ200CR Floor Waste

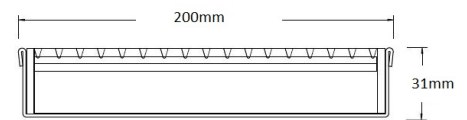
Product Description

The SQ200CR is a commercial style floor waste drain. Manufactured from 304 grade stainless steel it features a commercial style grate with a 5mm wire / 5mm gap.



Applications

- Balcony
- Courtyard /Patio
- Paved Area
- Pool Area
- Suspended slab
- Commercial Drainage
- Driveways



Specifications

	Width	Depth	Length	Outlet size
Unit	200mm	31mm	200mm	DN100

