

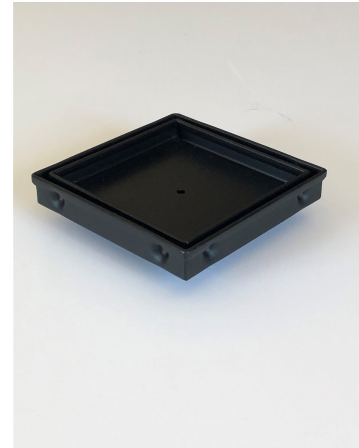
## SQP100Ti20-BLACK Floor Waste

### Product Description

The SQP100Ti Black is a premium floor waste drain.

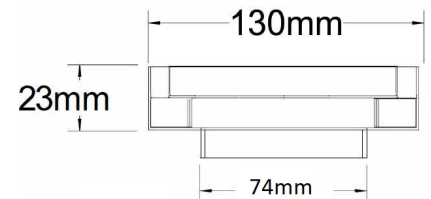
Manufactured from 316 marine grade stainless steel it features a premium tile insert drain and will suit a tile thickness of up to 12mm.

The SQP100Ti can be combined with the 100Ti or 65Ti linear drainage units for a unified look.



### Applications

- Balcony
- Bathroom
- Courtyard / Patio
- Paved Area
- Pool Area
- Shower
- Special needs
- Suspended slab
- Wet Area Drainage



### Specifications

	Width	Depth	Length	Outlet size
<b>Unit</b>	130mm	23mm	130mm	DN80

