

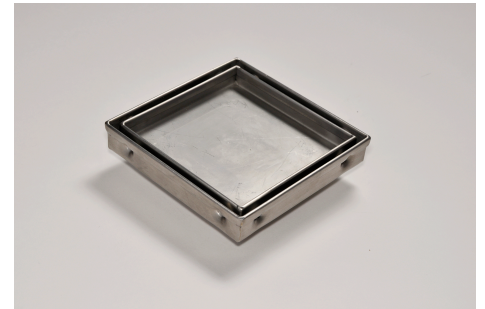
# SQP100Ti33 Floor Waste

## Product Description

The SQP100Ti33 is a premium floor waste drain.

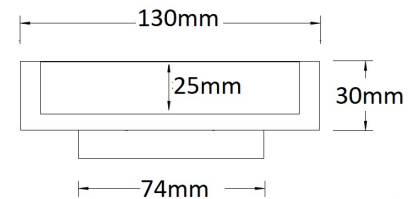
Manufactured from 316 marine grade stainless steel it features a premium tile insert drain and will suit a tile thickness of up to 25mm.

The SQP100Ti33-80 can be combined with any of Stormtech's various drainage units.



## Applications

- Balcony
- Bathroom
- Courtyard / Patio
- Paved Area
- Pool Area
- Shower
- Special needs
- Suspended slab
- Wet Area Drainage



## Specifications

	Width	Depth	Length	Outlet size
<b>Unit</b>	130mm	33mm	130mm	DN80

