

How FlexiFlange is installed

YOU'LL NEED

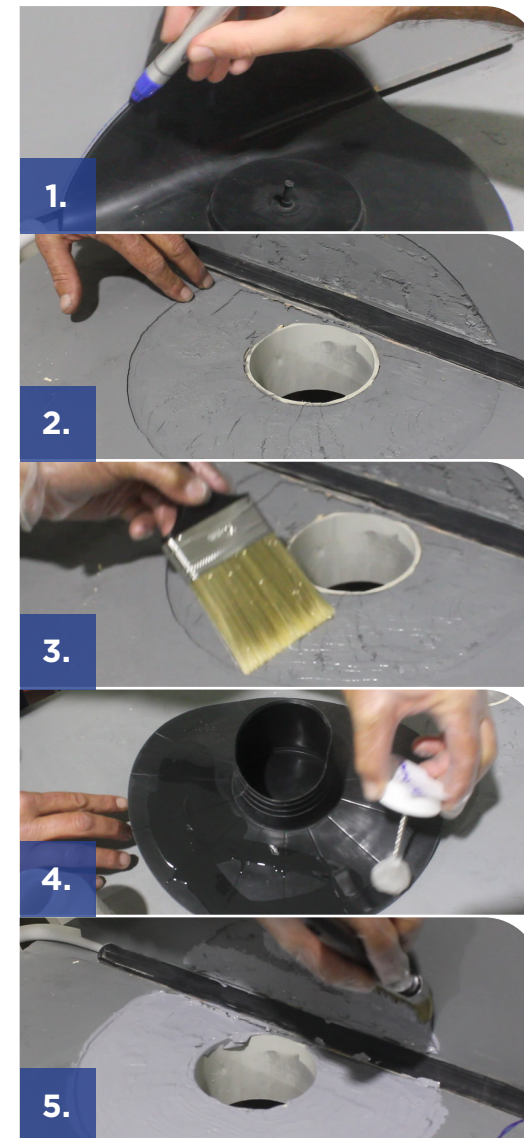
- MARKER
- GLOVES
- BRUSH
- PRIMER
- ADHESIVE SEALANT
- PVC PRIMER
- FLEXIBLE SEALANT
- SHARP BLADE



***Prior to installation of FlexiFlange, substrate must be prepared. Wall and floor junction to be prepared as per AS3740.**

1. Test fit and use a marker to trace the area where FlexiFlange will be installed.
2. Cut a smooth, shallow recess into the substrate so that the flange can sit flush within the floor.
3. Apply primer to the substrate*.
4. Apply PVC primer to the underside of flange*.
5. Apply adhesive sealant to the substrate, avoiding the bondbreaker/fillet.

***Select a primer, PVC primer and adhesive sealant that are compatible with both PVC and the substrate material.**



How FlexiFlange is installed

YOU'LL NEED

- MARKER
- GLOVES
- BRUSH
- PRIMER
- ADHESIVE SEALANT
- PVC PRIMER
- FLEXIBLE SEALANT
- SHARP BLADE



6. Pinch and push FlexiFlange into pipe and press down around the entire flange surface to achieve a tight bond with no air pockets.

7. Seal the flange/substrate transition with a flexible sealant.

8. Apply PVC primer on top side of flange

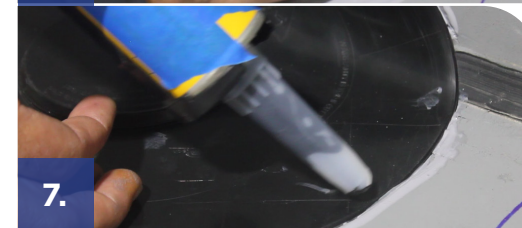
9. Apply membrane using FlexiFlange's integral 1 and 2mm thickness gauges as a guide. Leave cap in place to conduct flood testing.

10. Remove cap when ready to tile. **During this step take great care to ensure you do not cut the membrane.**

Using a sharp blade, carefully cut above the membrane. At the back edge, cut from the top down to avoid the wall. Complete a second pass to trim any protruding edges.



6.



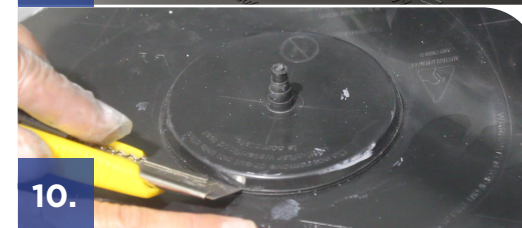
7.



8.



9.



10.

